



GEFÖRDERT VOM



Bundesministerium
für Bildung
und Forschung

CrEST Projektabschluss

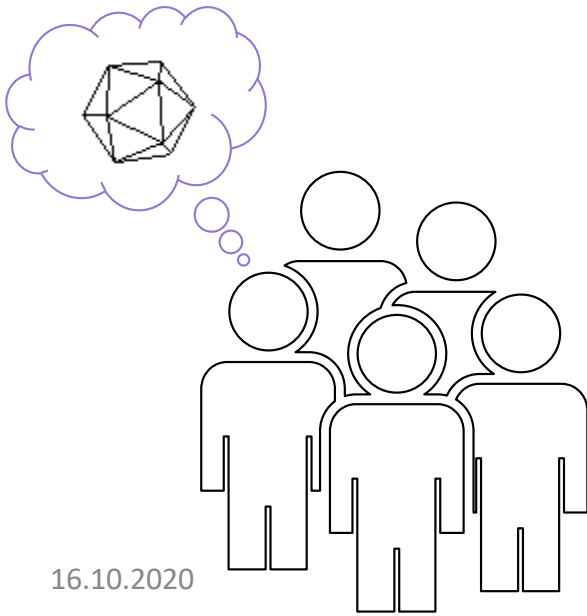
Context-sensitive Reconfiguration

Birte Caesar / Helmut-Schmidt Universität

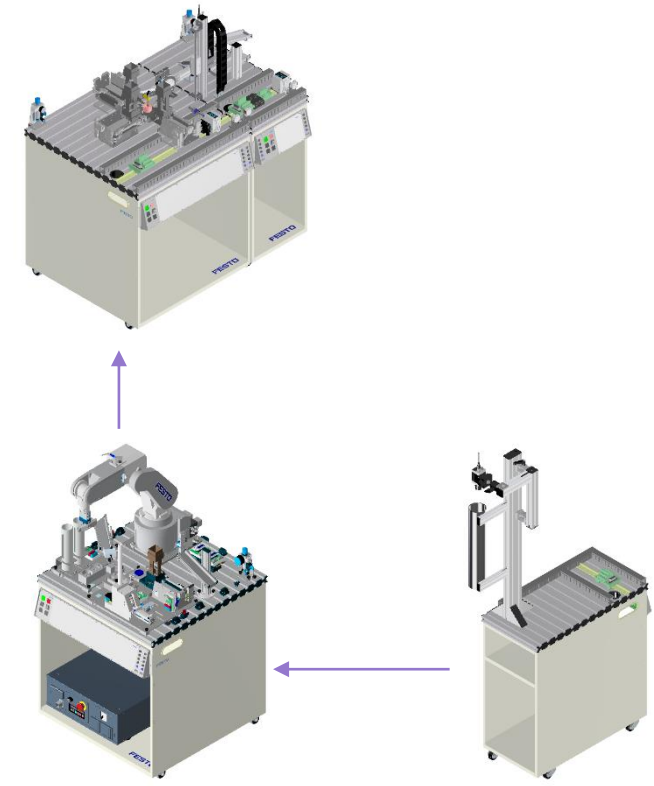
Ina Schaefer / Technische Universität Braunschweig

Motivation

- Varying production requests → different manufacturing system configurations

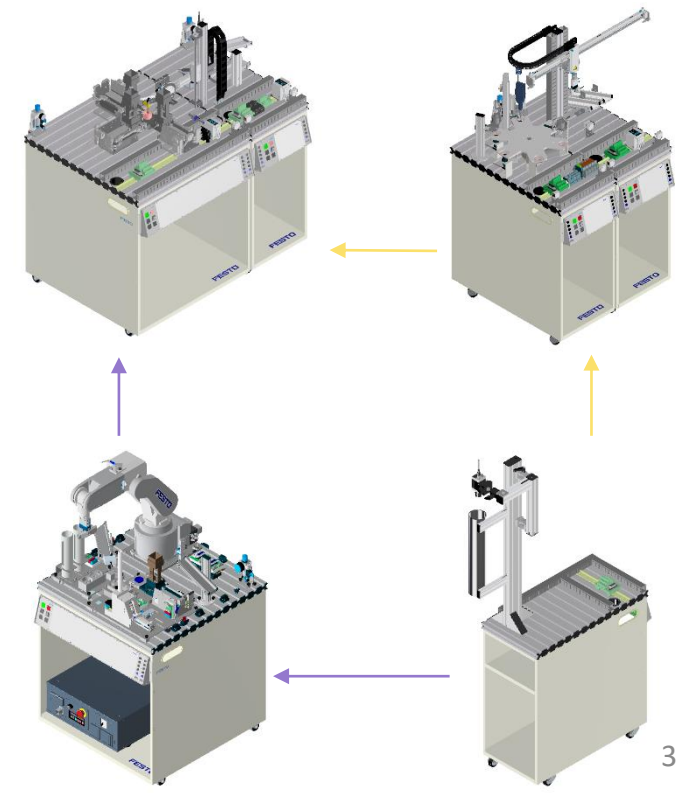
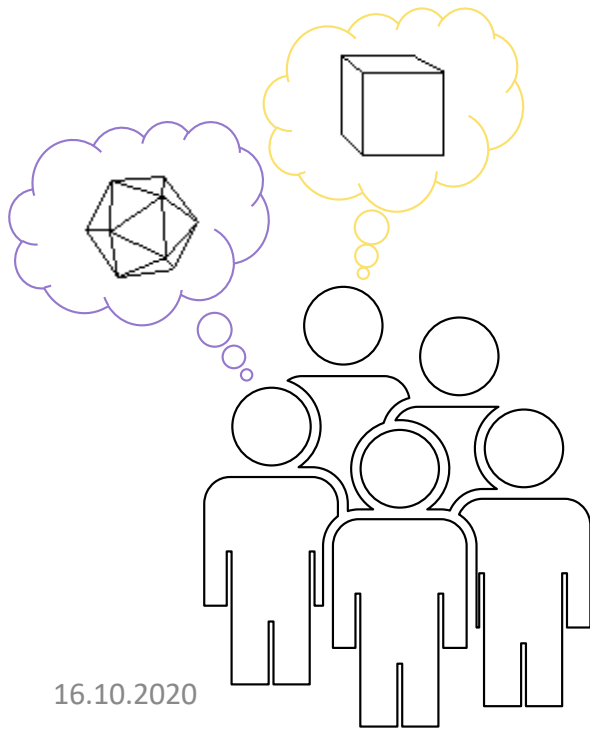


16.10.2020



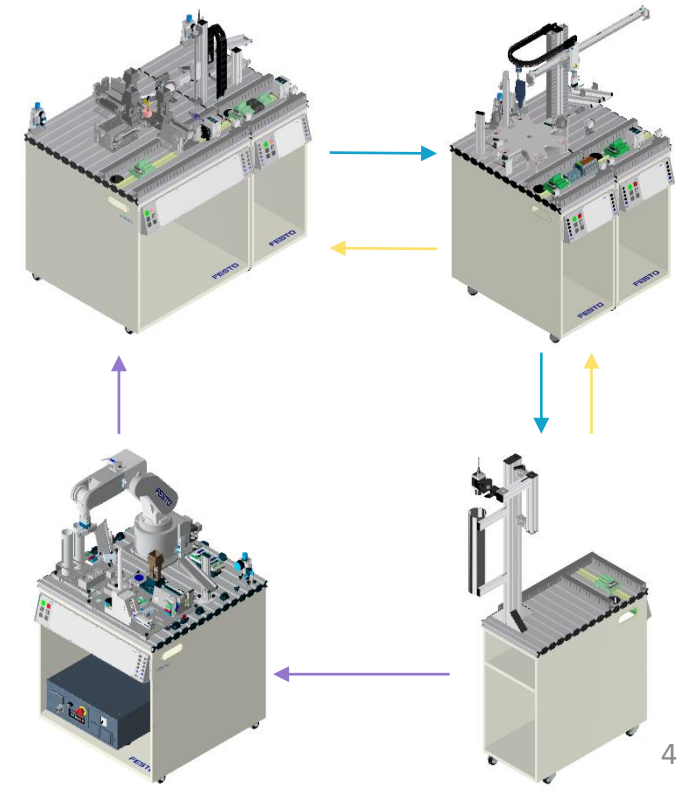
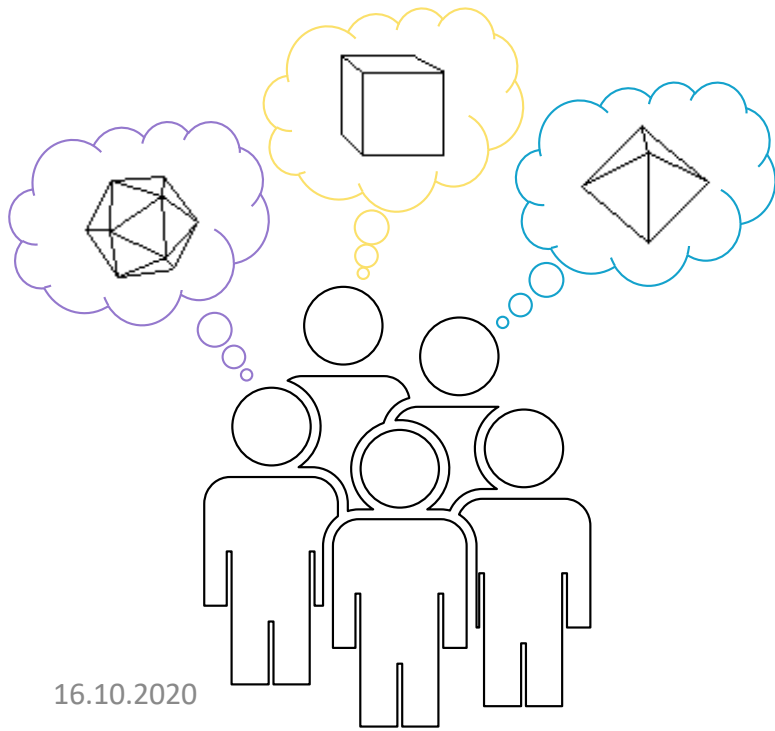
Motivation

- Varying production requests → different manufacturing system configurations



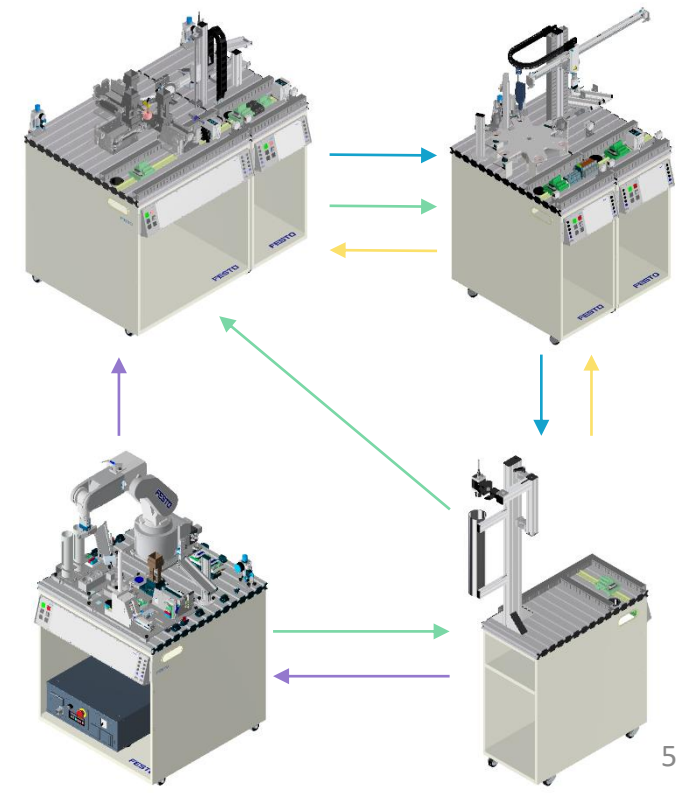
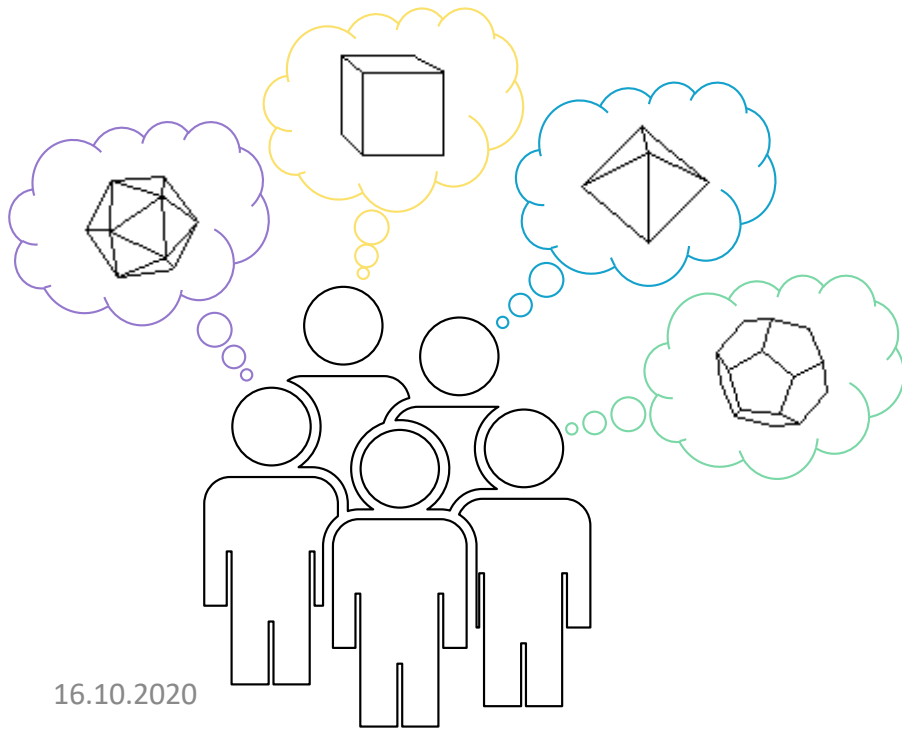
Motivation

- Varying production requests → different manufacturing system configurations



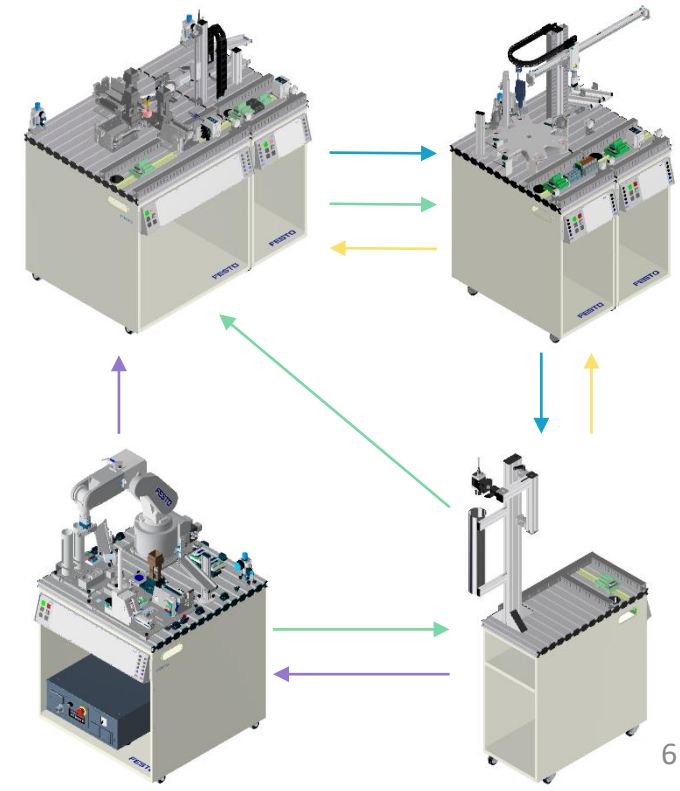
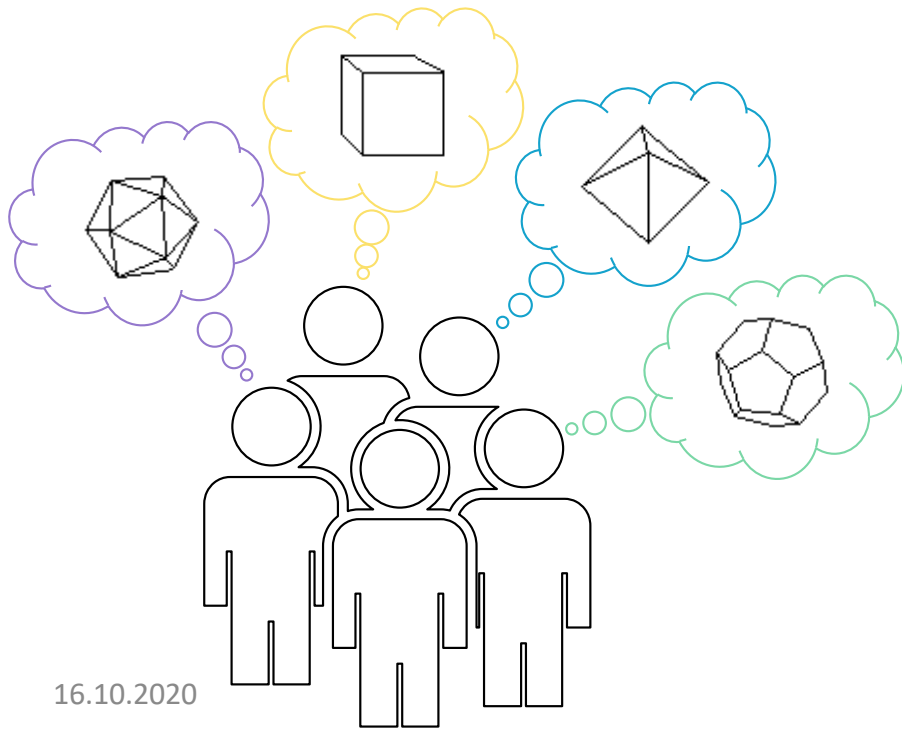
Motivation

- Varying production requests → different manufacturing system configurations



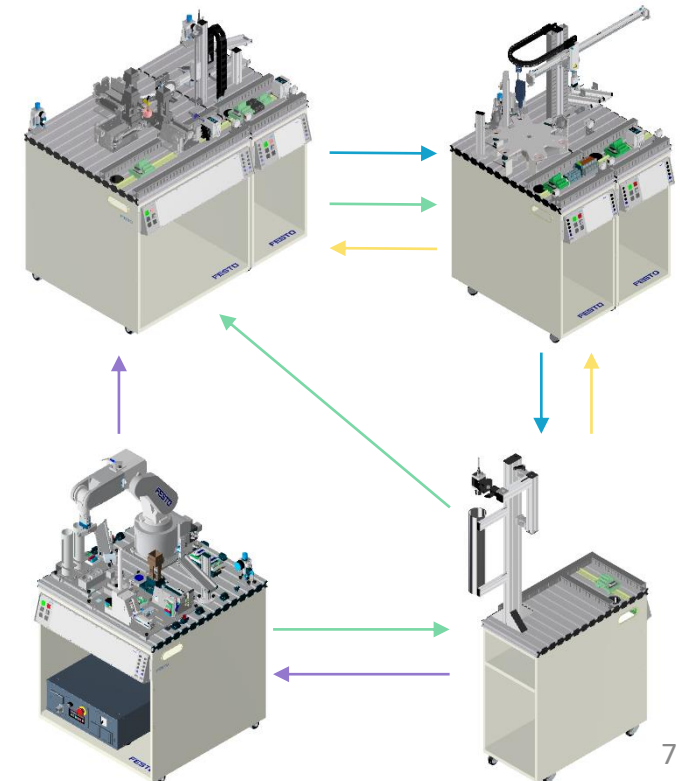
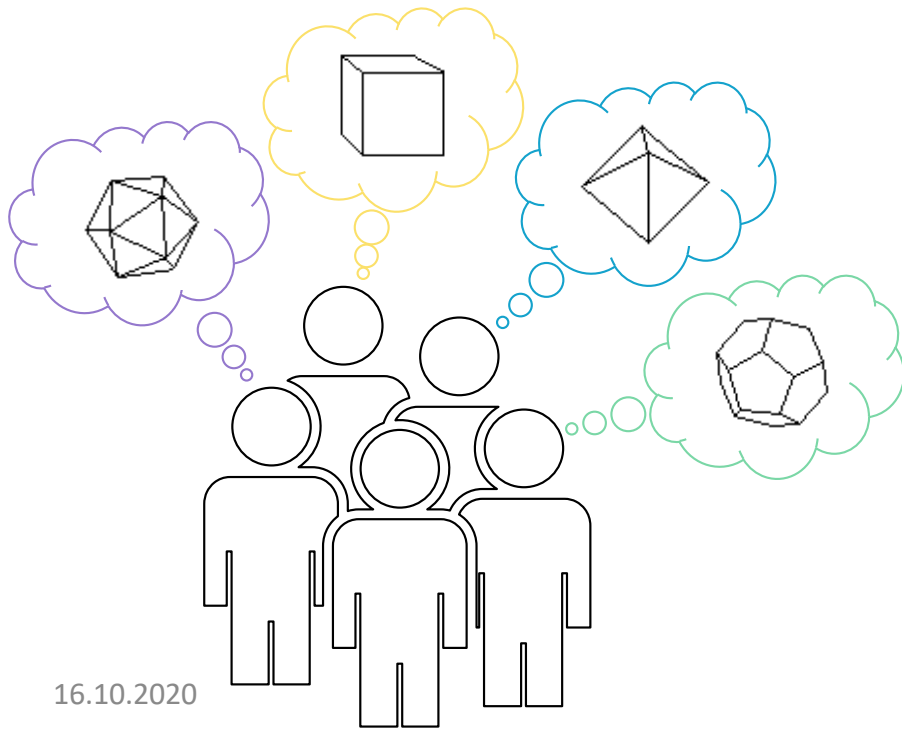
Motivation

- Varying production requests → different manufacturing system configurations
- Extract requirements for new production requests



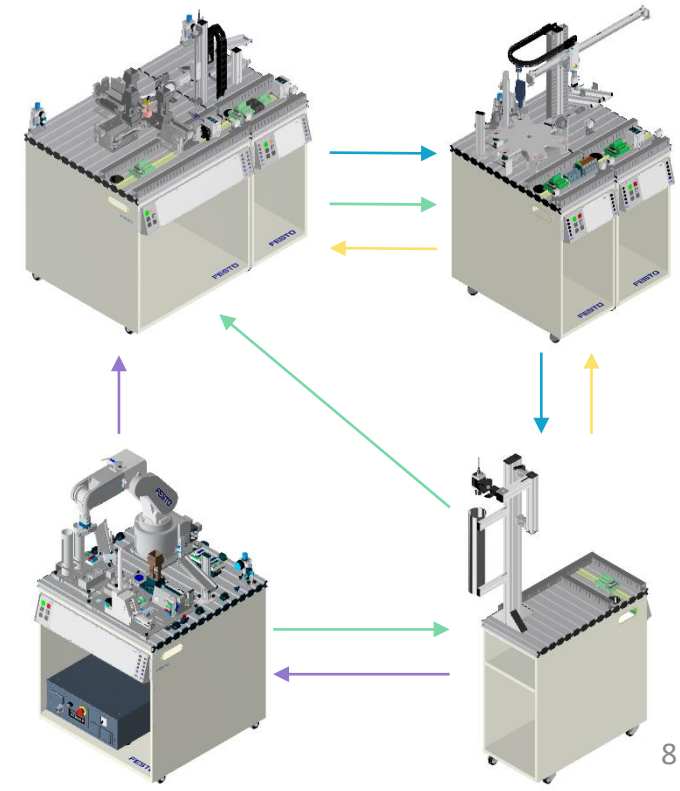
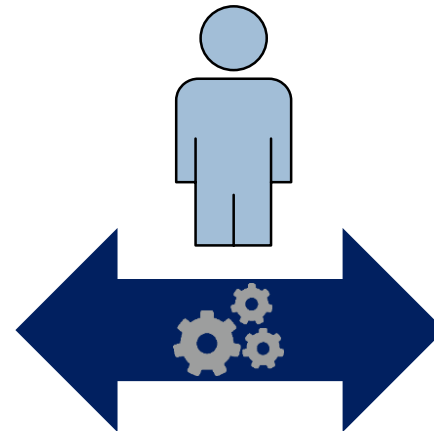
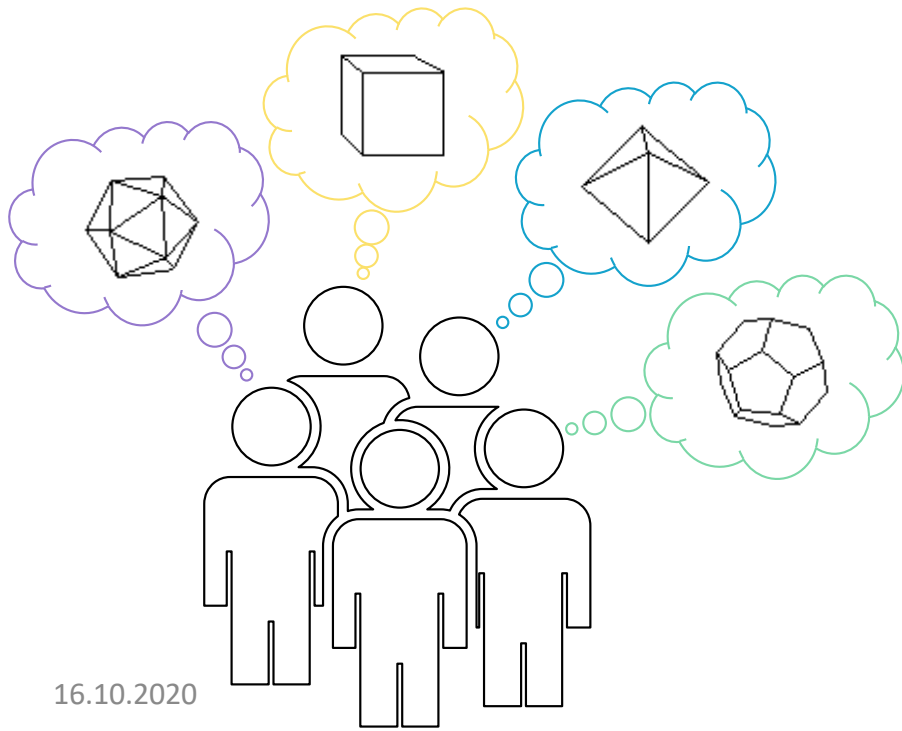
Motivation

- Varying production requests → different manufacturing system configurations
- Extract requirements for new production requests
- Evaluate whether the manufacturing system can fulfill requirements



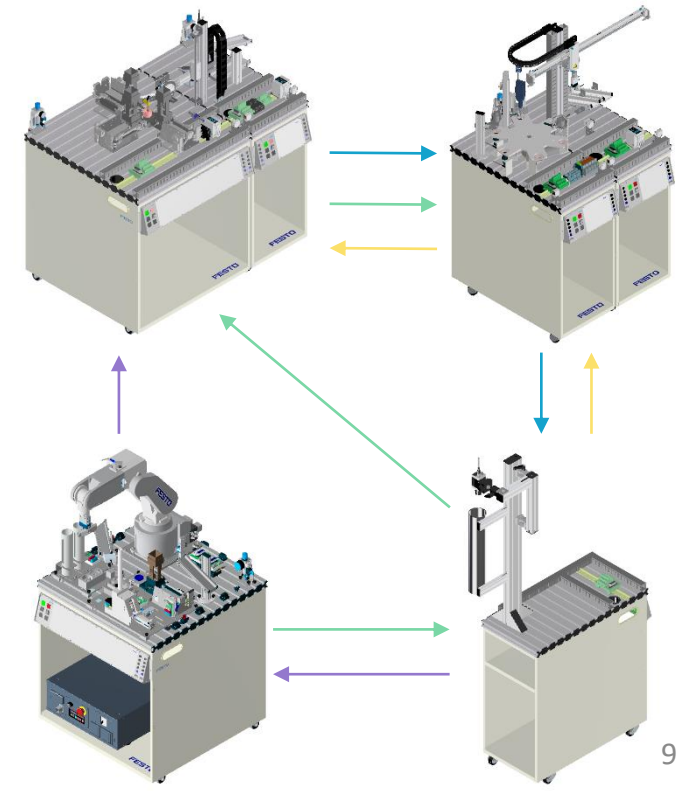
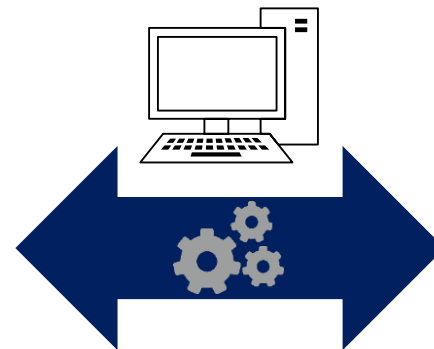
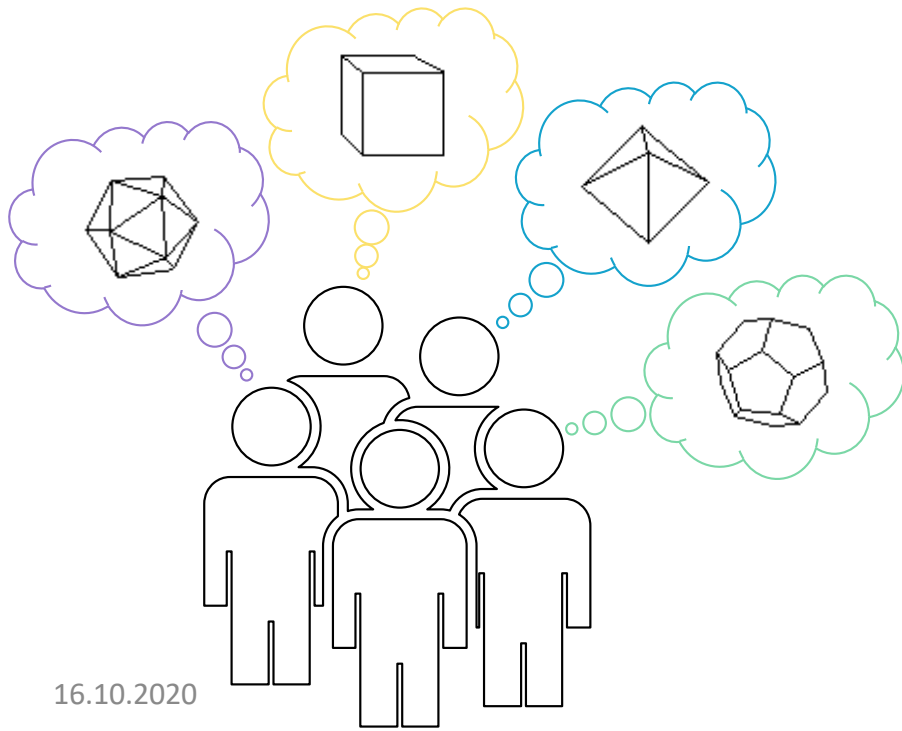
Motivation

- Varying production requests → different manufacturing system configurations
- Extract requirements for new production requests
- Evaluate whether the manufacturing system can fulfill requirements



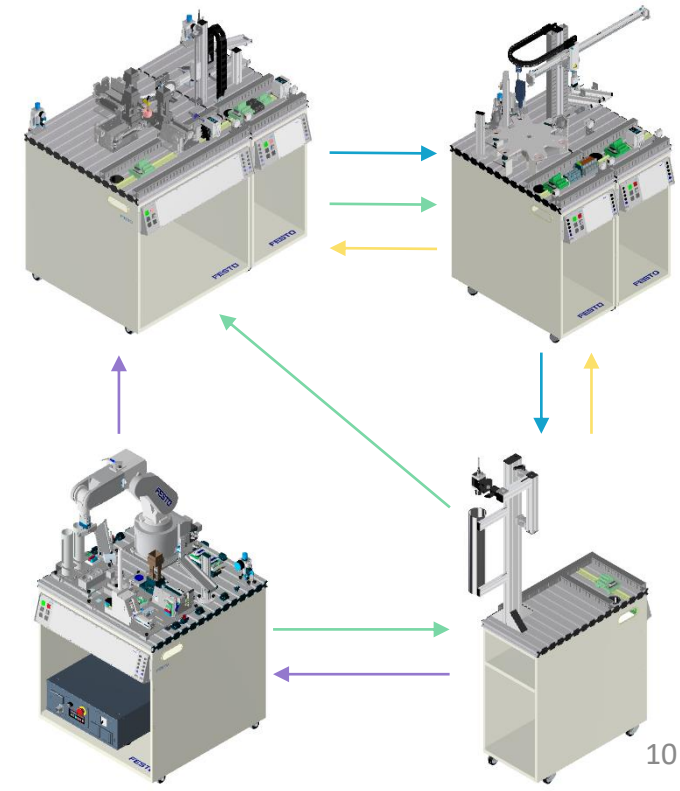
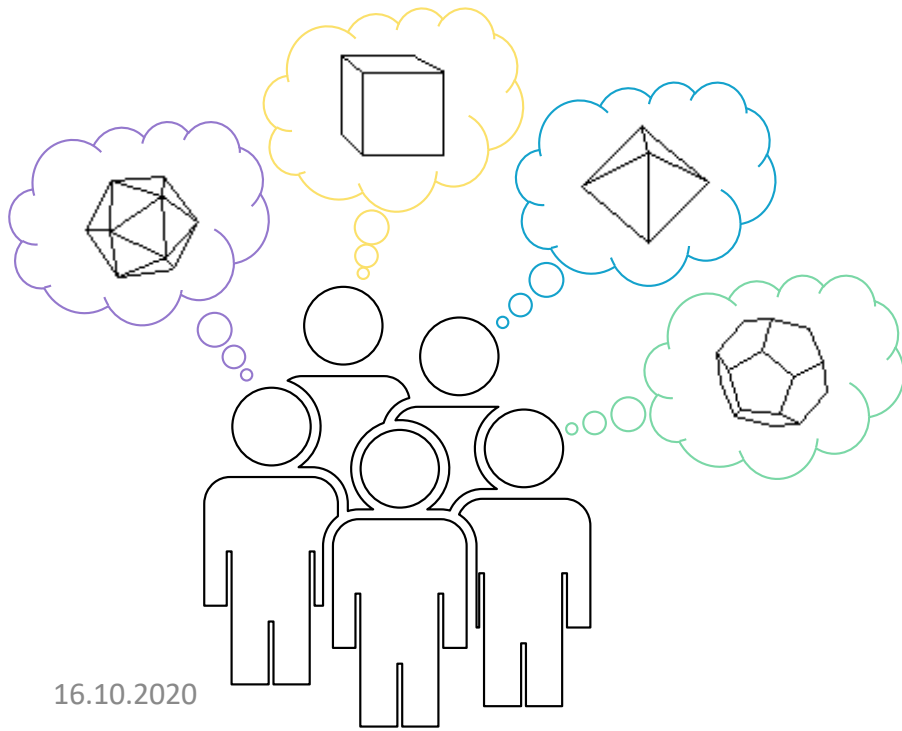
Motivation

- Varying production requests → different manufacturing system configurations
- Extract requirements for new production requests
- Evaluate whether the manufacturing system can fulfill requirements



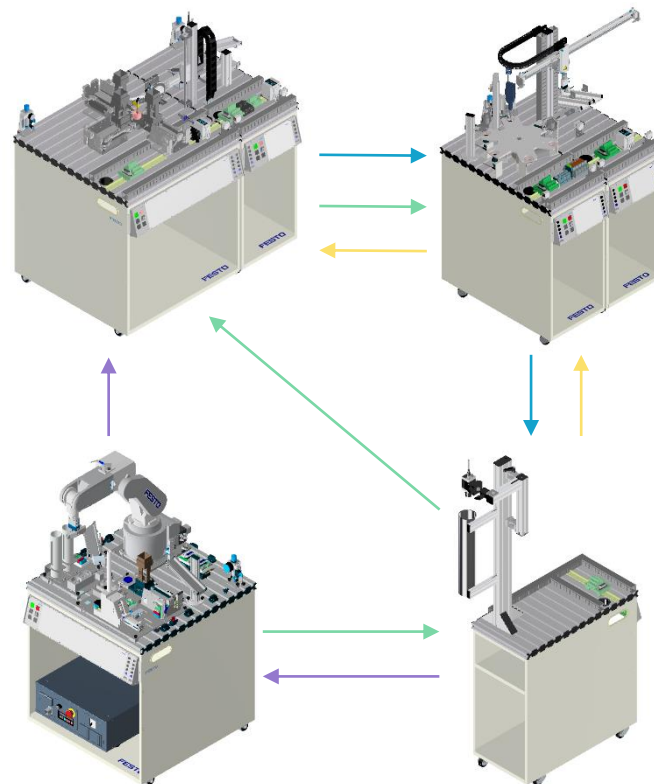
Motivation

- Varying production requests → different manufacturing system configurations
- Extract requirements for new production requests
- Evaluate whether the manufacturing system can fulfill requirements



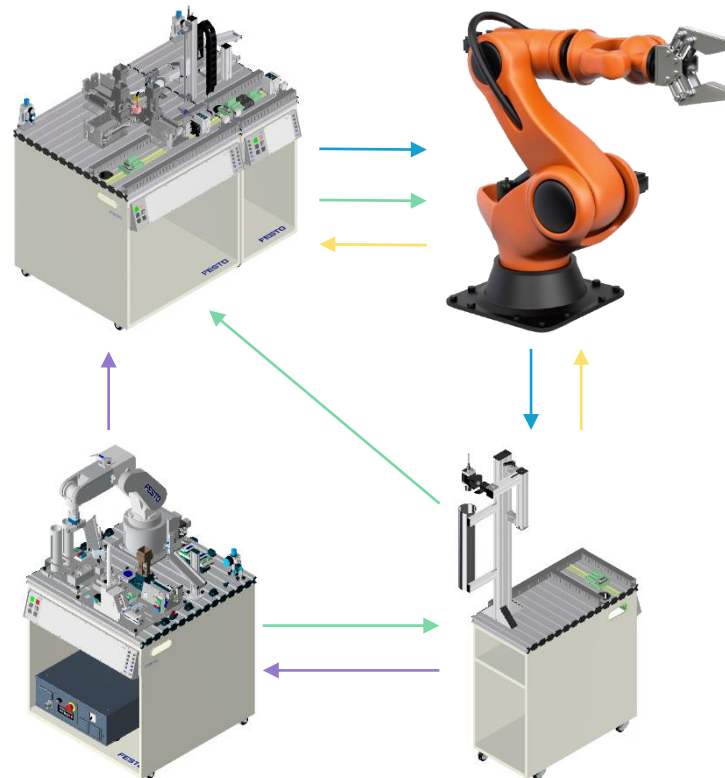
Motivation

- A Manufacturing system is composed of modules



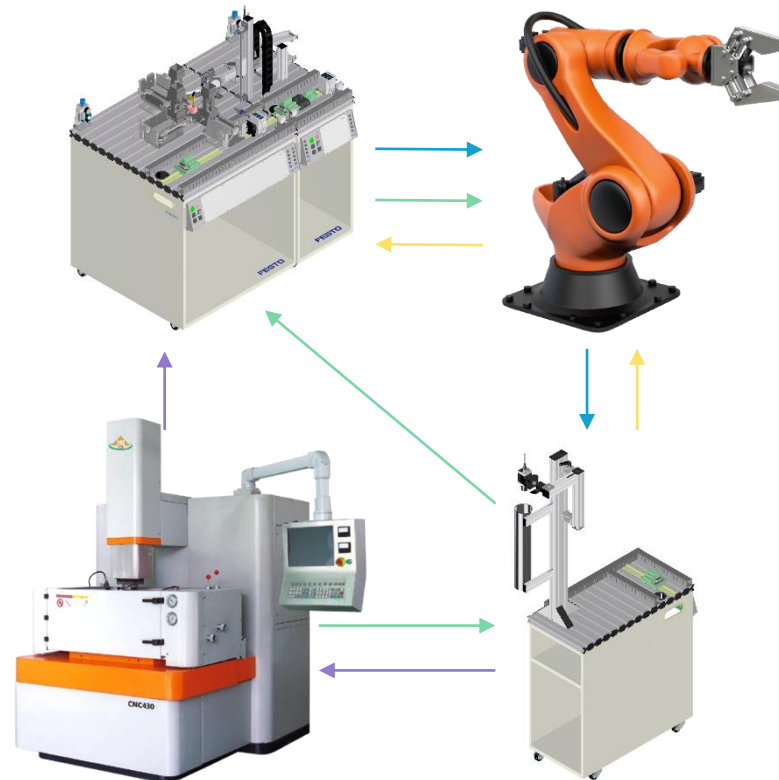
Motivation

- A Manufacturing system is composed of modules
- Modules are exchangeable



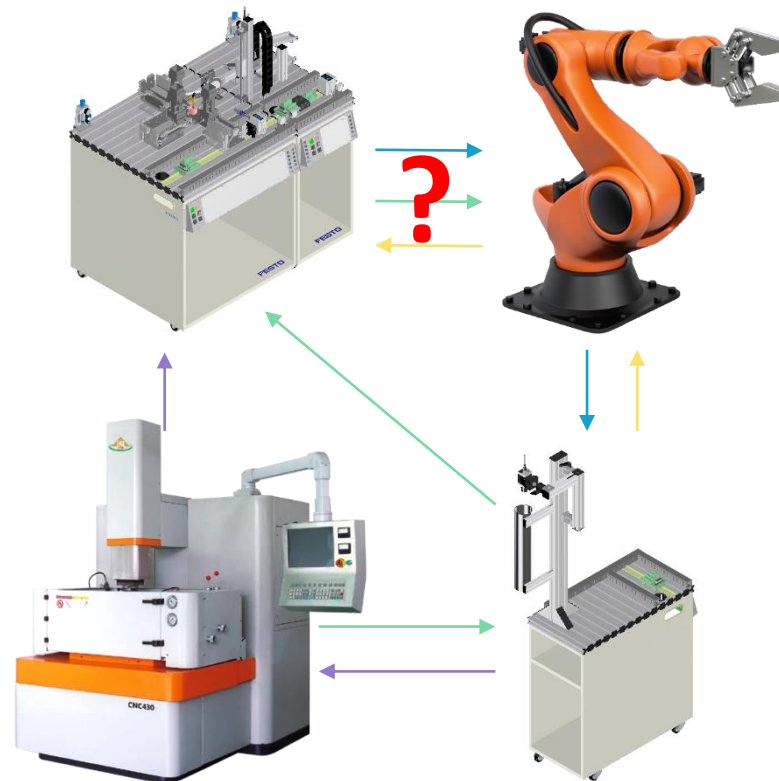
Motivation

- A Manufacturing system is composed of modules
- Modules are exchangeable



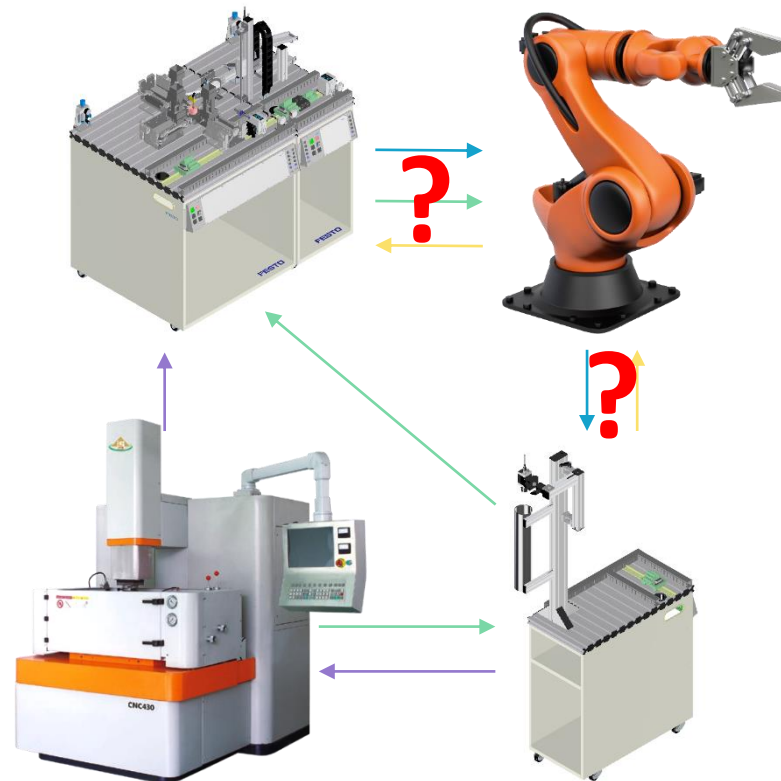
Motivation

- A Manufacturing system is composed of modules
- Modules are exchangeable



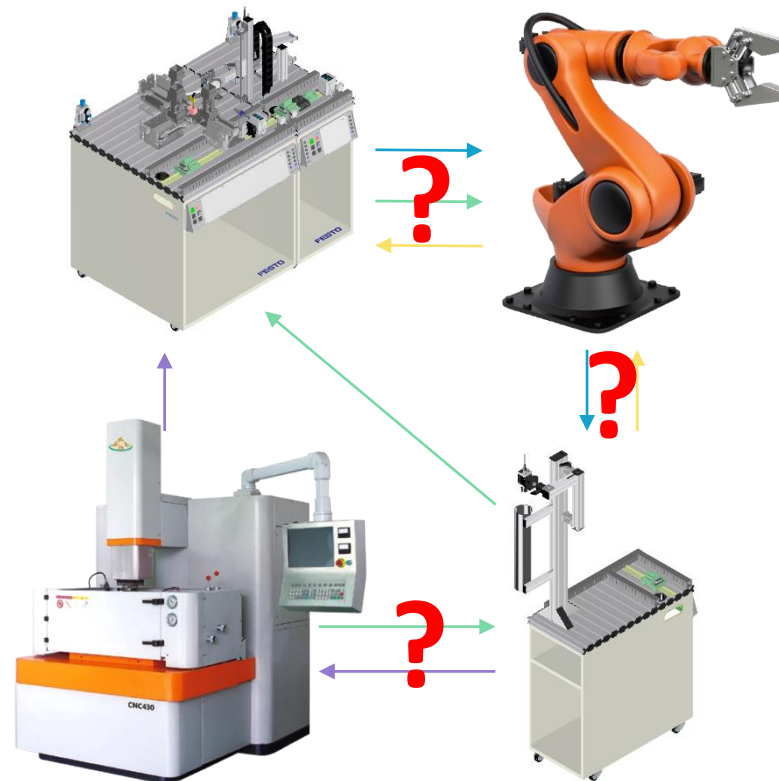
Motivation

- A Manufacturing system is composed of modules
- Modules are exchangeable



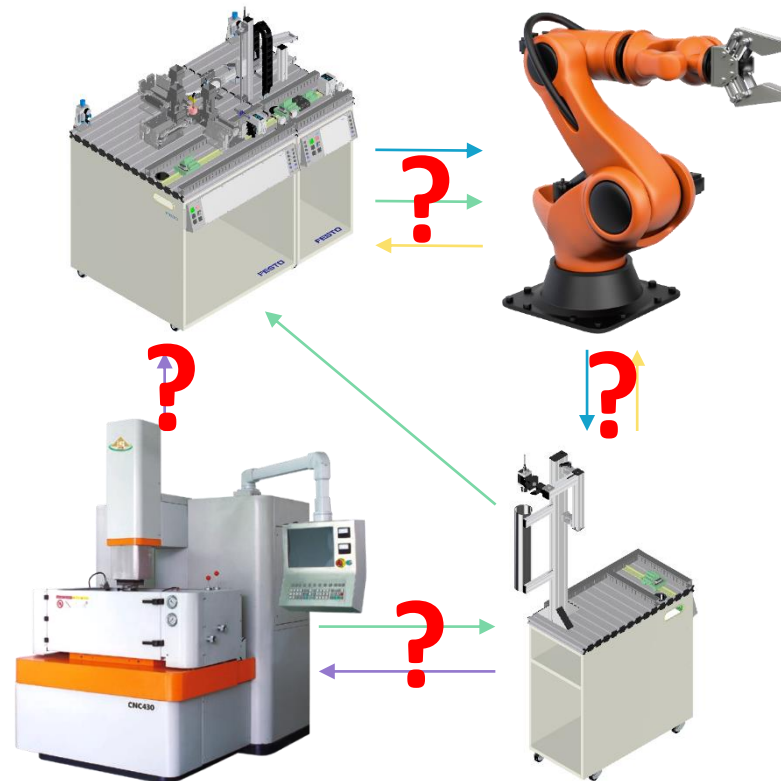
Motivation

- A Manufacturing system is composed of modules
- Modules are exchangeable



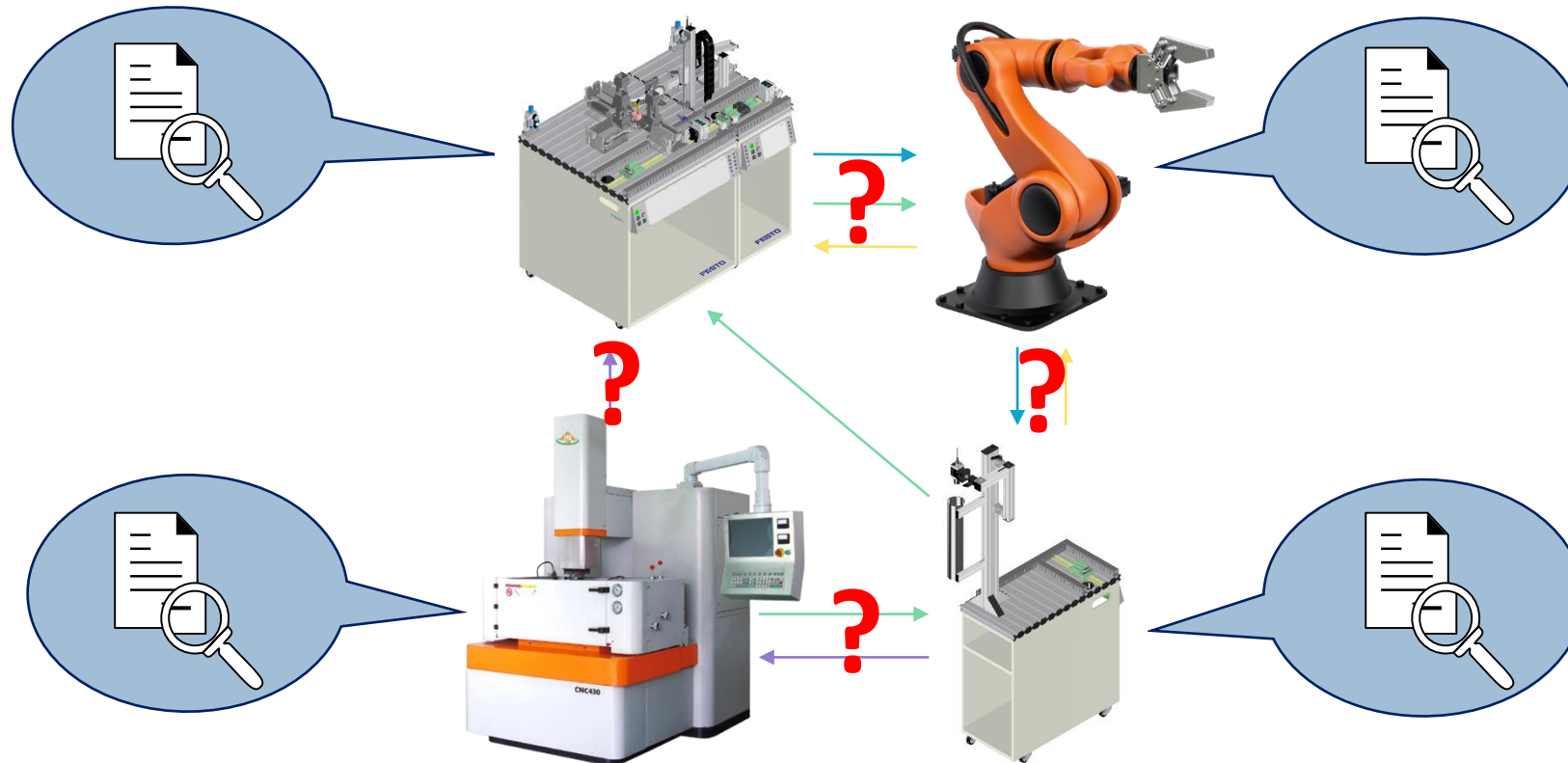
Motivation

- A Manufacturing system is composed of modules
- Modules are exchangeable



Motivation

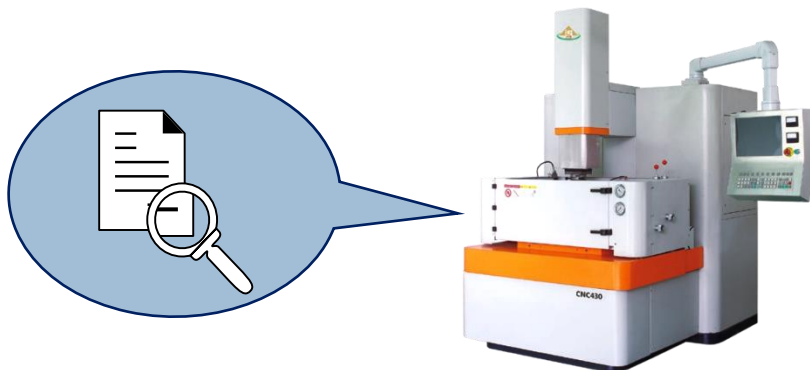
- A Manufacturing system is composed of modules
- Modules are exchangeable
- Module capabilities must be communicated to evaluate producability



Motivation

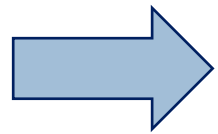
- Manufacturing system is composed of modules
- Modules are exchangeable
- Module capabilities must be communicated to evaluate producability

 How to model the capability description of each module?



Motivation

- Manufacturing system is composed of modules
- Modules are exchangeable
- Module capabilities must be communicated to evaluate producability



How to model the capability description of each module?

- Modules can be configured → changing capabilities



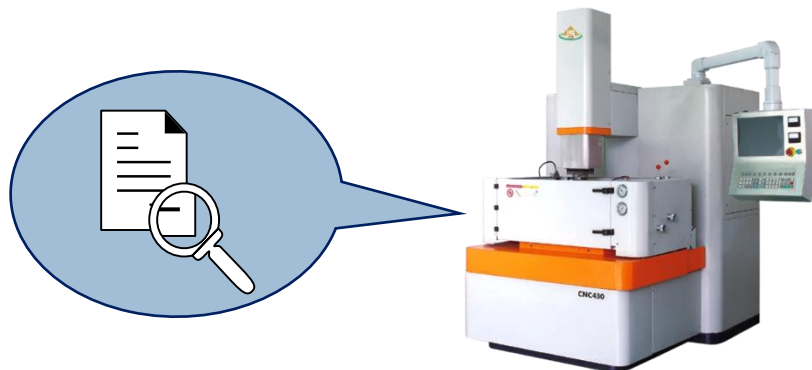
Motivation

- Manufacturing system is composed of modules
- Modules are exchangeable
- Module capabilities must be communicated to evaluate producibility

➔ How to model the capability description of each module?

- Modules can be configured → changing capabilities

➔ How to select the right configuration of a module?



Method - Overview

How to model the capability description of each module?

- Ontology Usage for Capability Description

How to select the right configuration of a module?

- Context-sensitive-Variability Models

Introduction to Ontology

“An ontology may take a variety of forms, but necessarily it will include a ***vocabulary of terms***, and some ***specification of their meaning***. This includes definitions and an **indication of how concepts are inter-related** which collectively impose a structure on the domain and constrain the possible interpretations of terms”

(R. Jasper & M. Uschold, 1999)

- Ontologies are graphs
- The terms and relations (including attributes) form the so-called terminology box (T-Box)
- The axioms (i.g., individuals of the ontology) form the assertional box (A-Box) which conform to the T-Box

Ontology Usage for Capability Description

Why use ontologies?

- High number of interacting systems?
- Open context?
- Complexity and dynamicity of exchanged data?
- Long-term usage?

Ontology Usage for Capability Description

Why use ontologies?

- ✓ High number of interacting systems?
 - Open context?
 - Complexity and dynamicity of exchanged data?
 - Long-term usage?

Ontology Usage for Capability Description

Why use ontologies?

- ✓ High number of interacting systems?
- ✓ Open context?
 - Complexity and dynamicity of exchanged data?
 - Long-term usage?

Ontology Usage for Capability Description

Why use ontologies?

- ✓ High number of interacting systems?
- ✓ Open context?
- ✓ Complexity and dynamicity of exchanged data?
 - Long-term usage?

Ontology Usage for Capability Description

Why use ontologies?

- ✓ High number of interacting systems?
- ✓ Open context?
- ✓ Complexity and dynamicity of exchanged data?
- ✓ Long-term usage?

Ontology Usage for Capability Description

Why use ontologies?

- ✓ High number of interacting systems?
- ✓ Open context?
- ✓ Complexity and dynamicity of exchanged data?
- ✓ Long-term usage?

Terminological Box (T-Box) for capability description

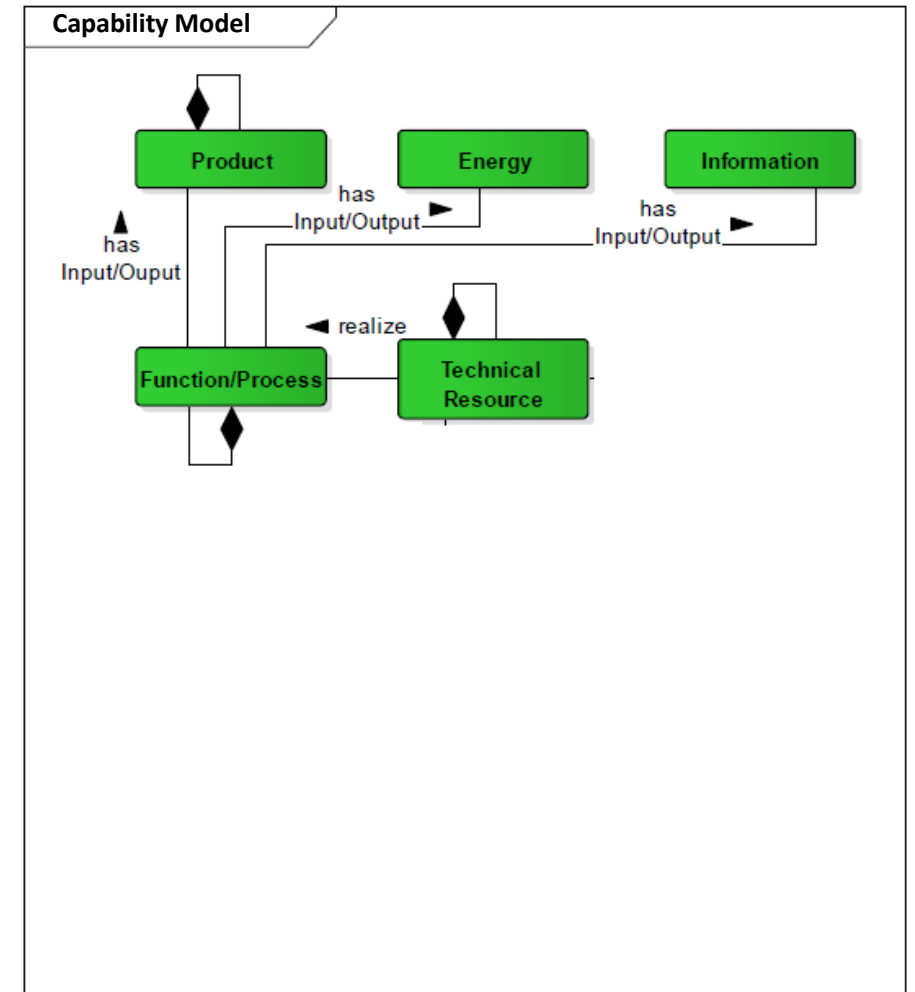
Ontology Usage for Capability Description

Why use ontologies?

- ✓ High number of interacting systems?
- ✓ Open context?
- ✓ Complexity and dynamicity of exchanged data?
- ✓ Long-term usage?

Terminological Box (T-Box) for capability description

- Function (VDI/VDE 3682-2): Transformation of input to output



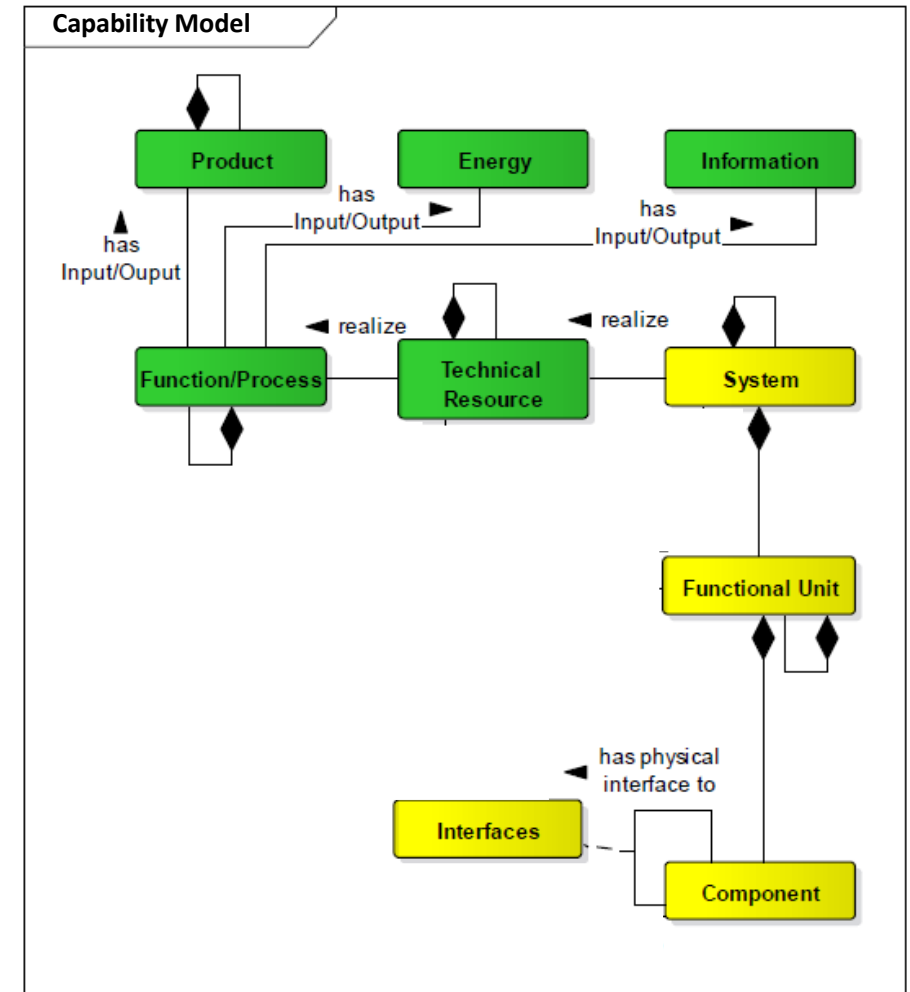
Ontology Usage for Capability Description

Why use ontologies?

- ✓ High number of interacting systems?
- ✓ Open context?
- ✓ Complexity and dynamicity of exchanged data?
- ✓ Long-term usage?

Terminological Box (T-Box) for capability description

- Function (VDI/VDE 3682-2): Transformation of input to output
- Structure (IEC 62264-1): Components as well as their relations to other components



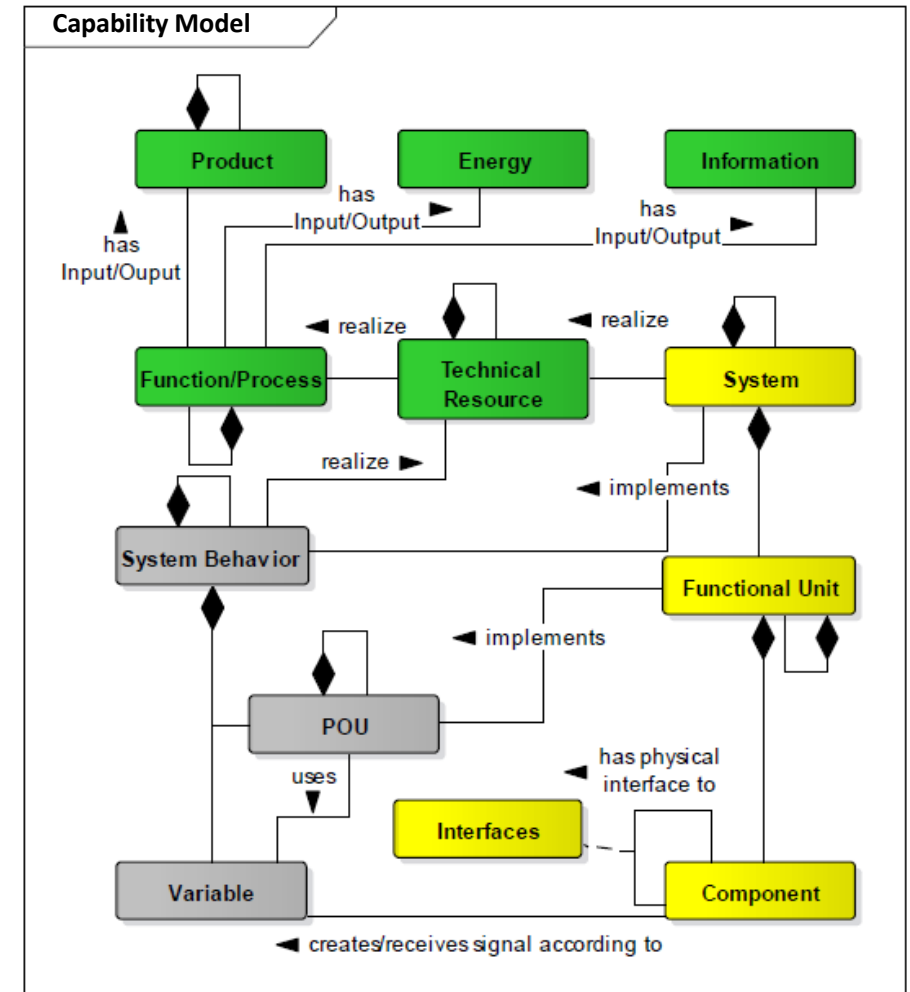
Ontology Usage for Capability Description

Why use ontologies?

- ✓ High number of interacting systems?
- ✓ Open context?
- ✓ Complexity and dynamicity of exchanged data?
- ✓ Long-term usage?

Terminological Box (T-Box) for capability description

- Function (VDI/VDE 3682-2): Transformation of input to output
- Structure (IEC 62264-1): Components as well as their relations to other components
- Behavior (IEC 61131-3): Procedures, states or variables for information processing



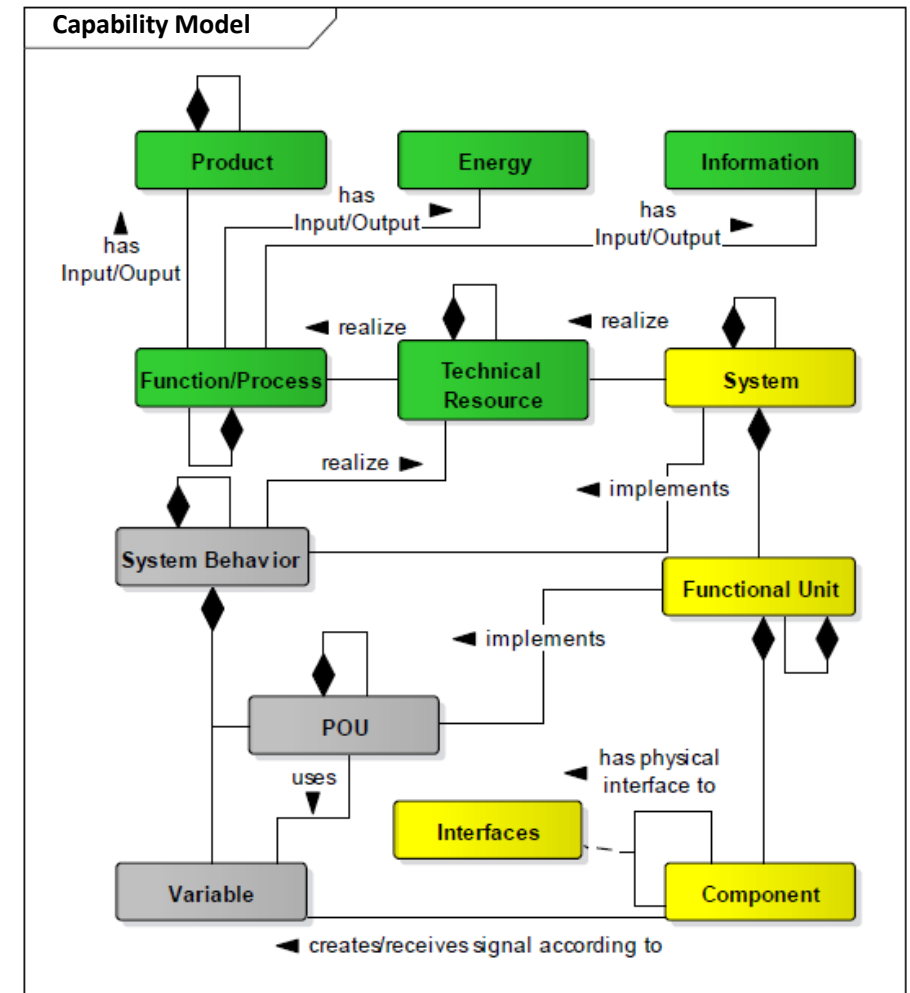
Ontology Usage for Capability Description

Why use ontologies?

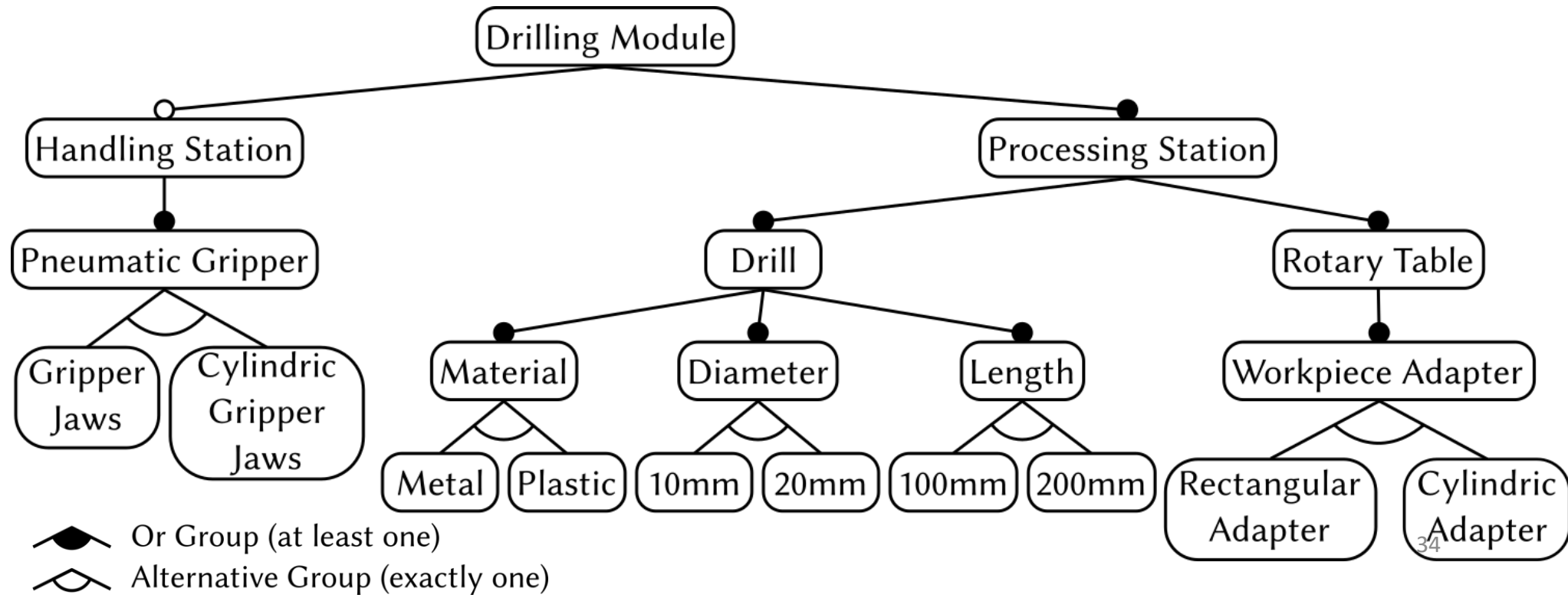
- ✓ High number of interacting systems?
- ✓ Open context?
- ✓ Complexity and dynamicity of exchanged data?
- ✓ Long-term usage?

Terminological Box (T-Box) for capability description

- Function (VDI/VDE 3682-2): Transformation of input to output
- Structure (IEC 62264-1): Components as well as their relations to other components
- Behavior (IEC 61131-3): Procedures, states or variables for information processing
- Characteristics (DIN/EN 61360-1): Simple or complex data types

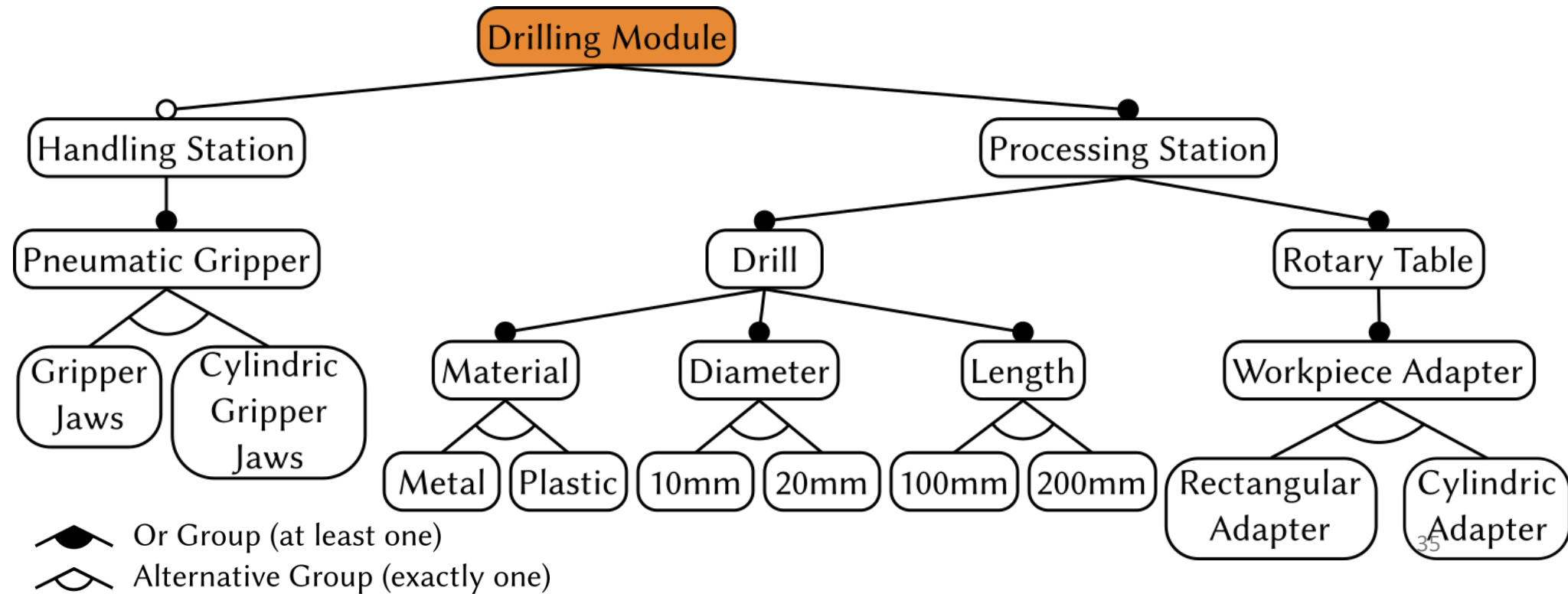


Feature Model



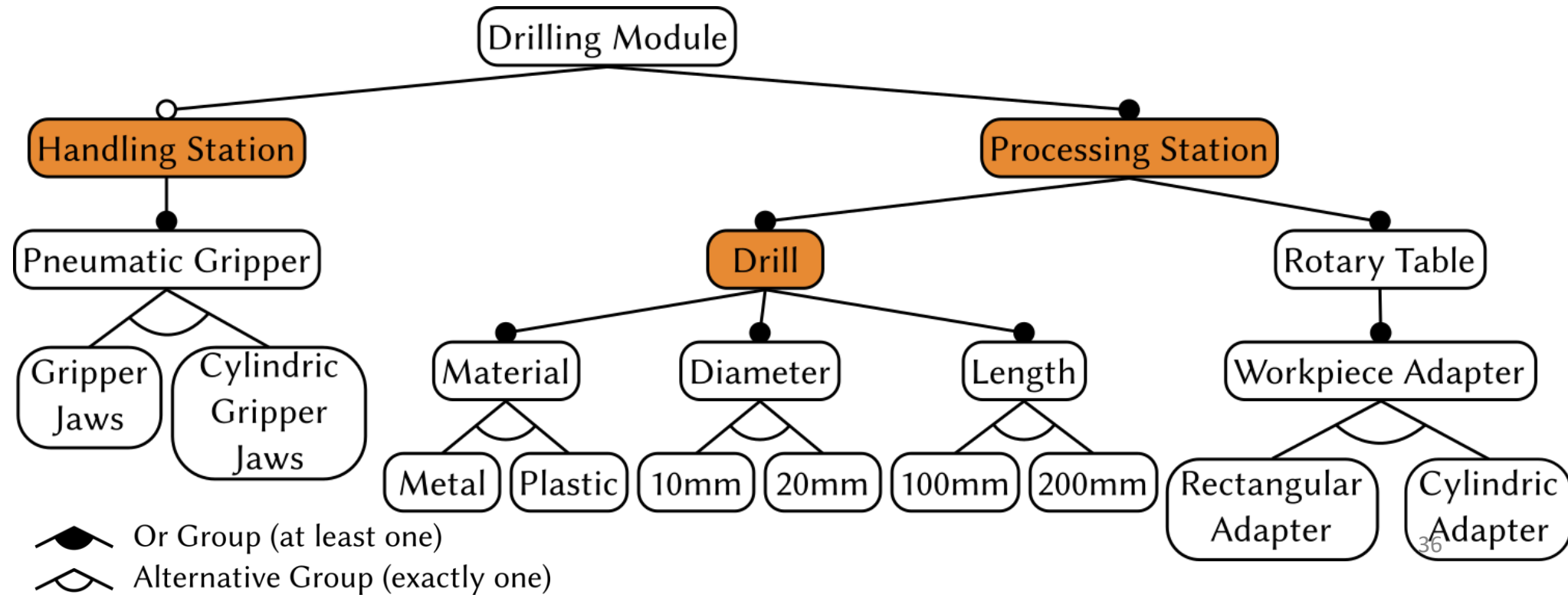
Feature Model

- Root feature represents the manufacturing module



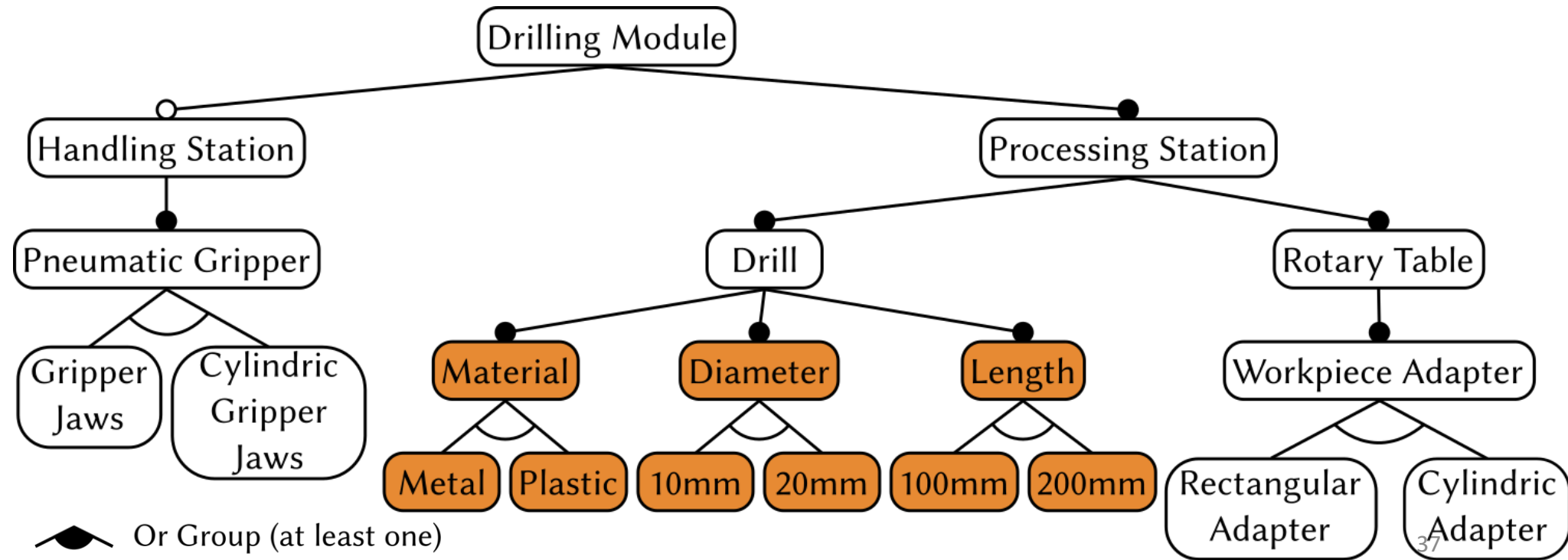
Feature Model

- Root feature represents the manufacturing module
- Adaptable components are modelled below

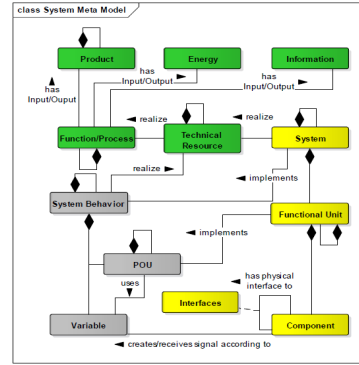


Feature Model

- Root feature represents the manufacturing module
- Adaptable components are modelled below
- Resource parameters are subordinated



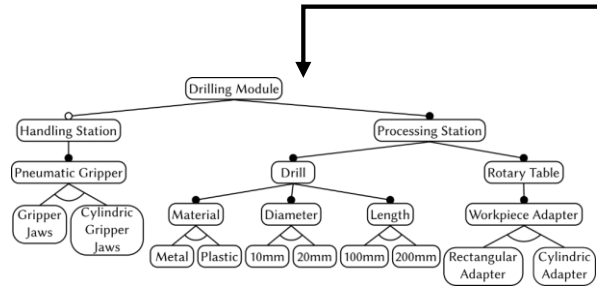
Approach Overview



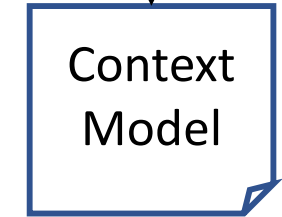
System
Ontology



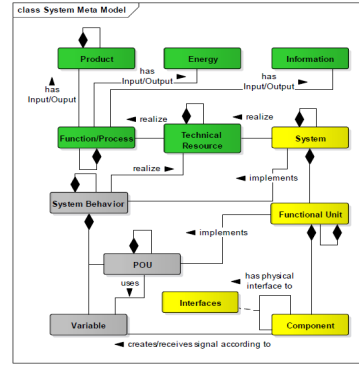
<<derive>>



Feature Model



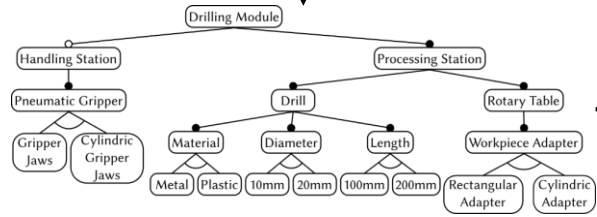
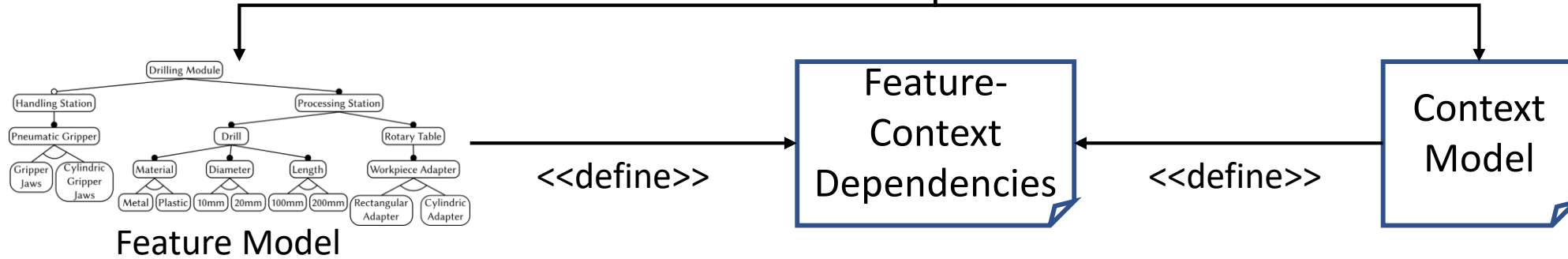
Approach Overview



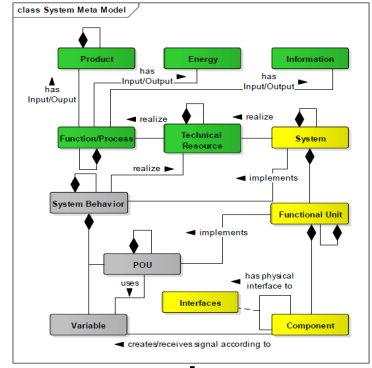
System Ontology



<<derive>>

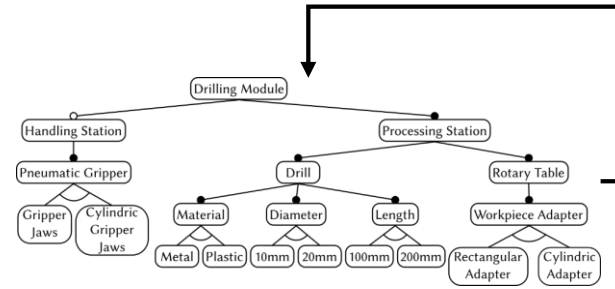


Approach Overview

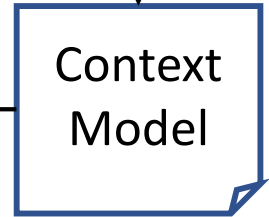
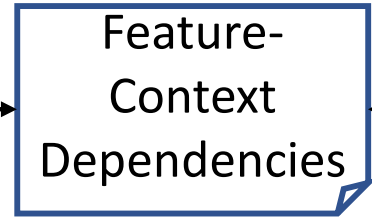


System Ontology

<<derive>>



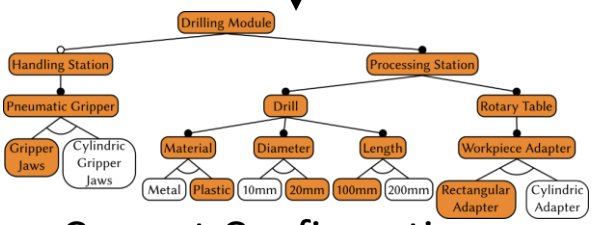
Feature Model



<<define>>

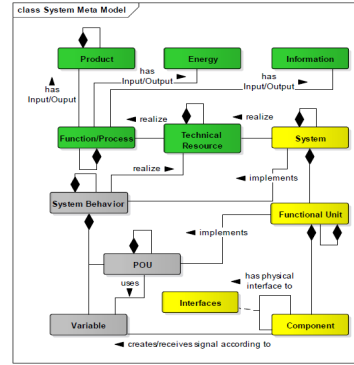
<<define>>

<<derive>>



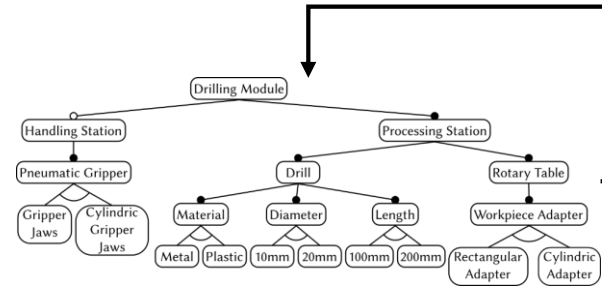
Current Configuration

Approach Overview



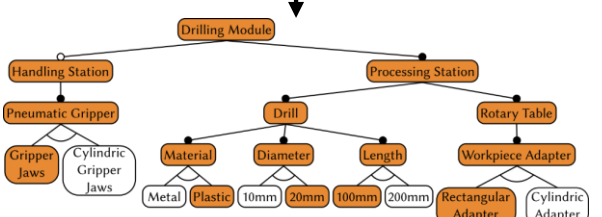
System Ontology

<<derive>>



Feature Model

<<derive>>

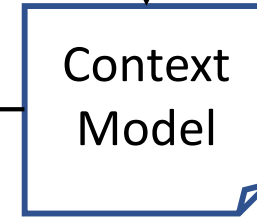


Current Configuration

<<define>>



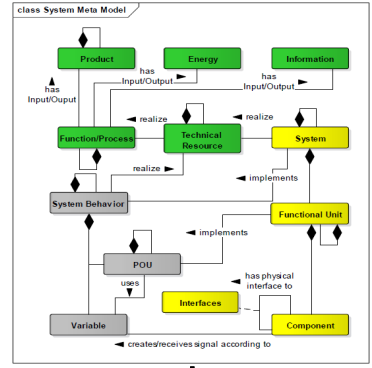
<<define>>



New Production Request

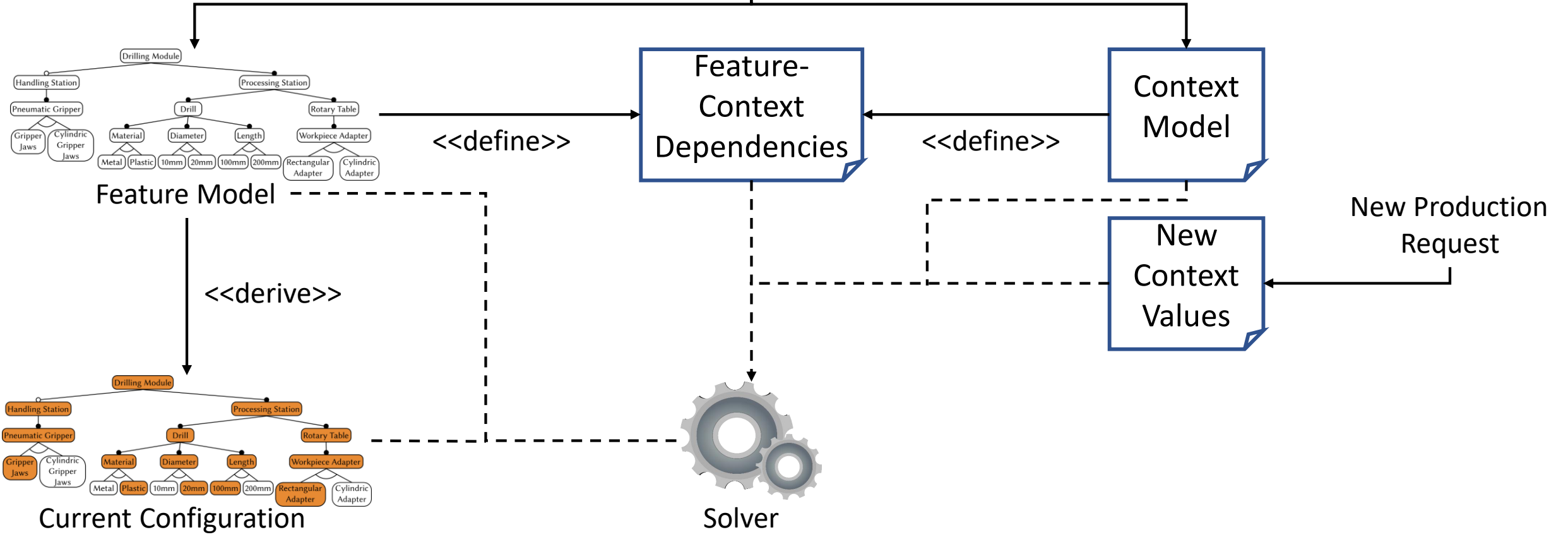


Approach Overview

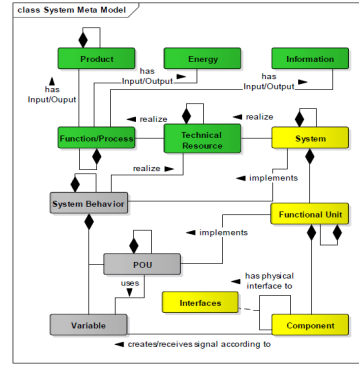


System Ontology

<<derive>>

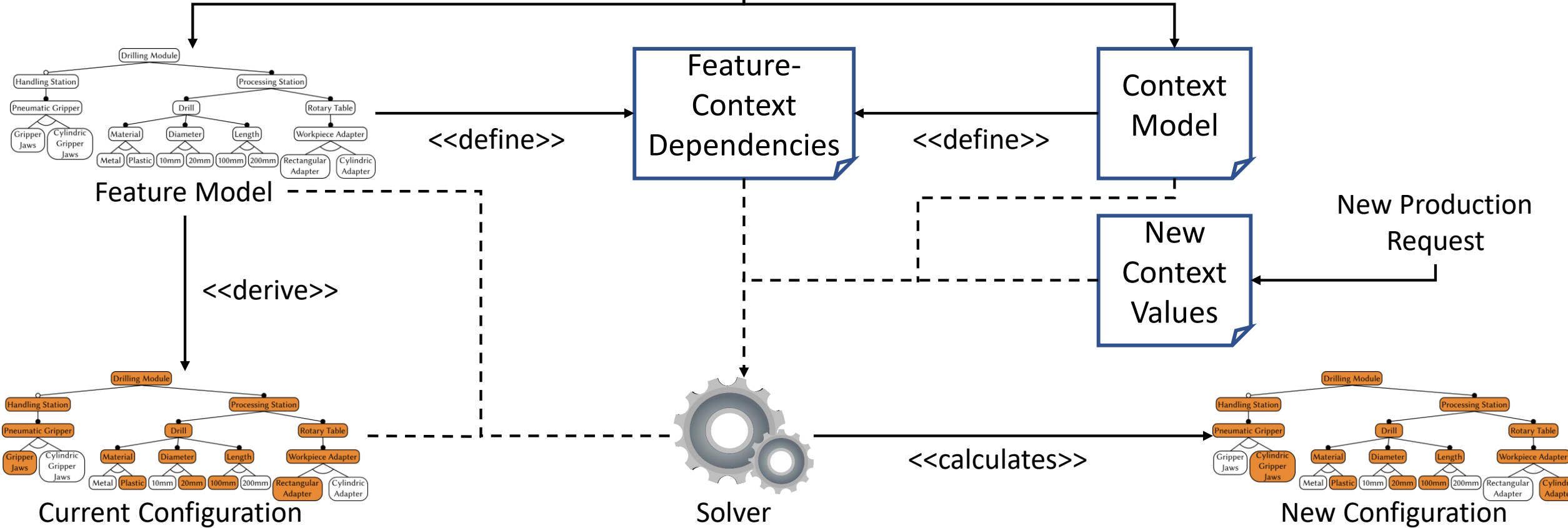


Approach Overview



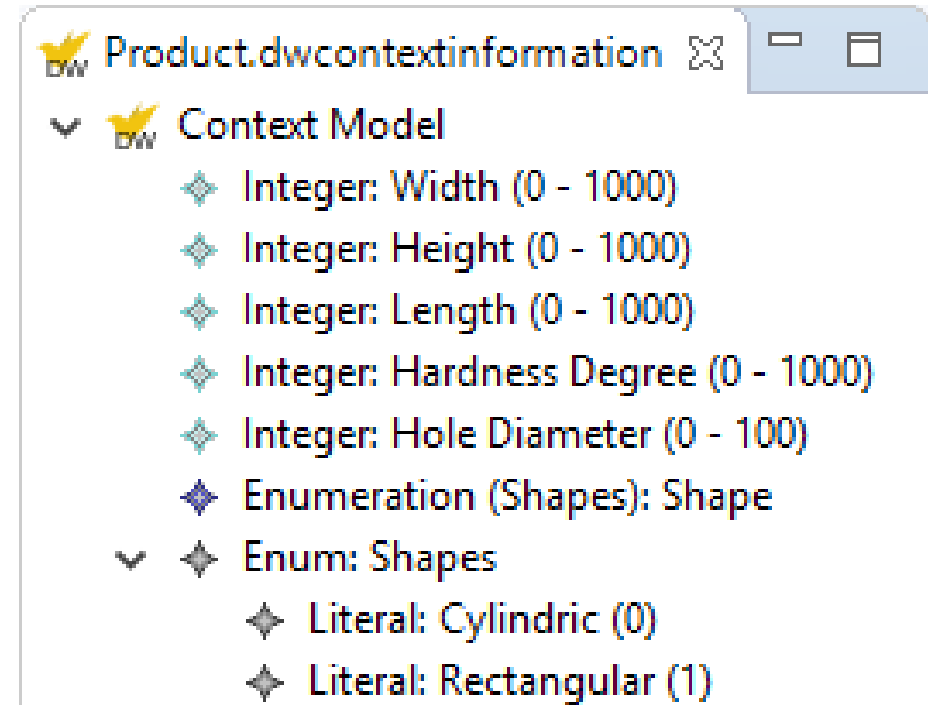
System Ontology

<<derive>>



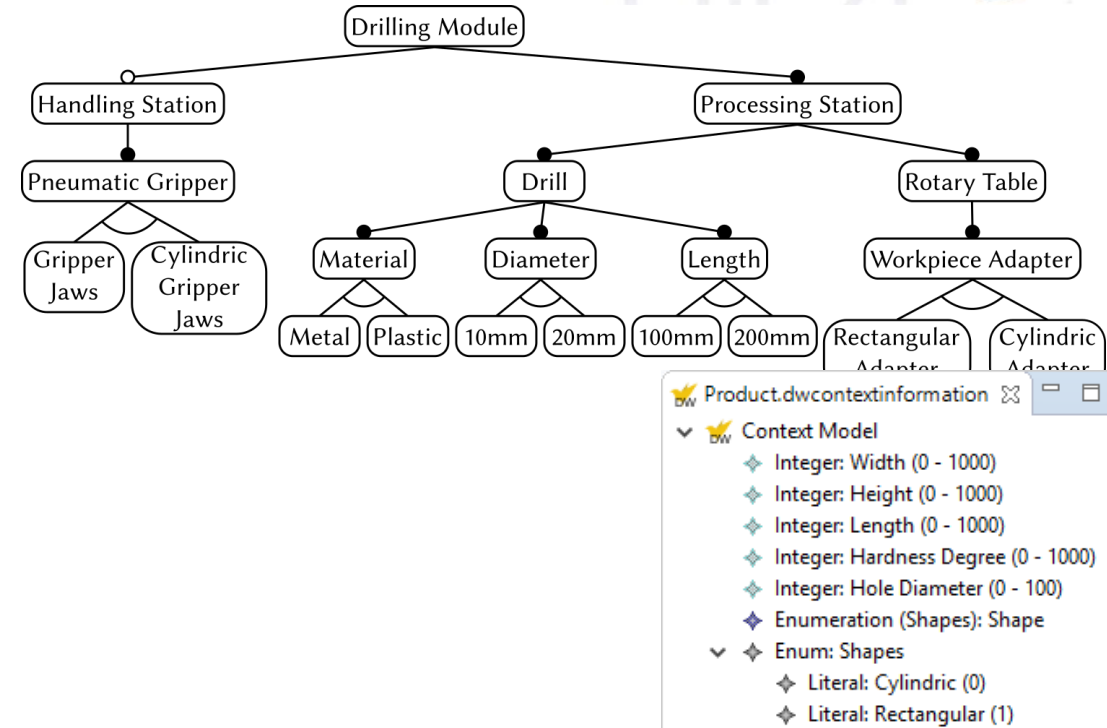
Context-sensitive Variability Model

- Context model contains all relevant parameters that can trigger a reconfiguration
- Resource parameters are translated into product parameters with parameter range



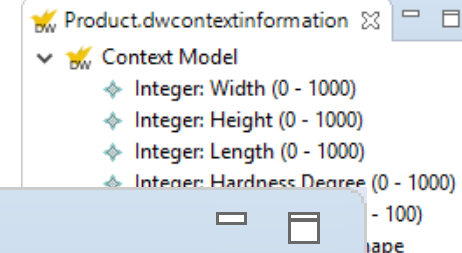
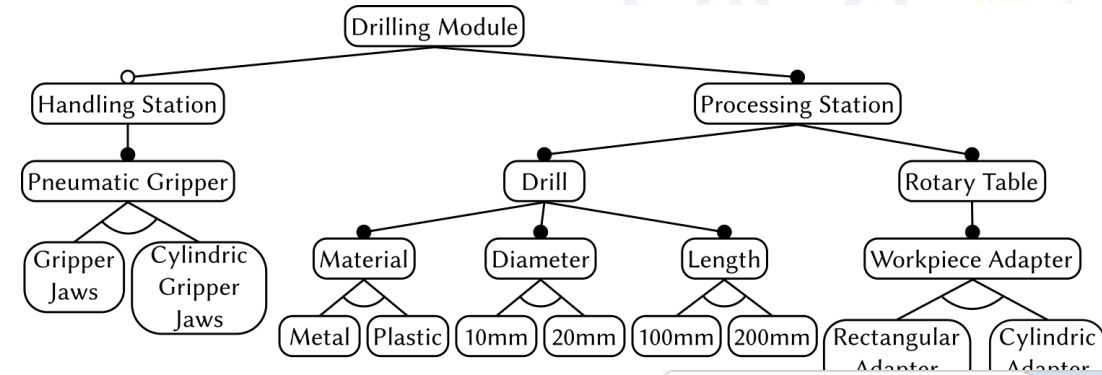
Context-sensitive Variability Model

- Dependencies are modeled as **cross-tree constraints**
- Dependencies between:
 - components
 - resource parameters
 - product parameters
 - context information



Context-sensitive Variability Model

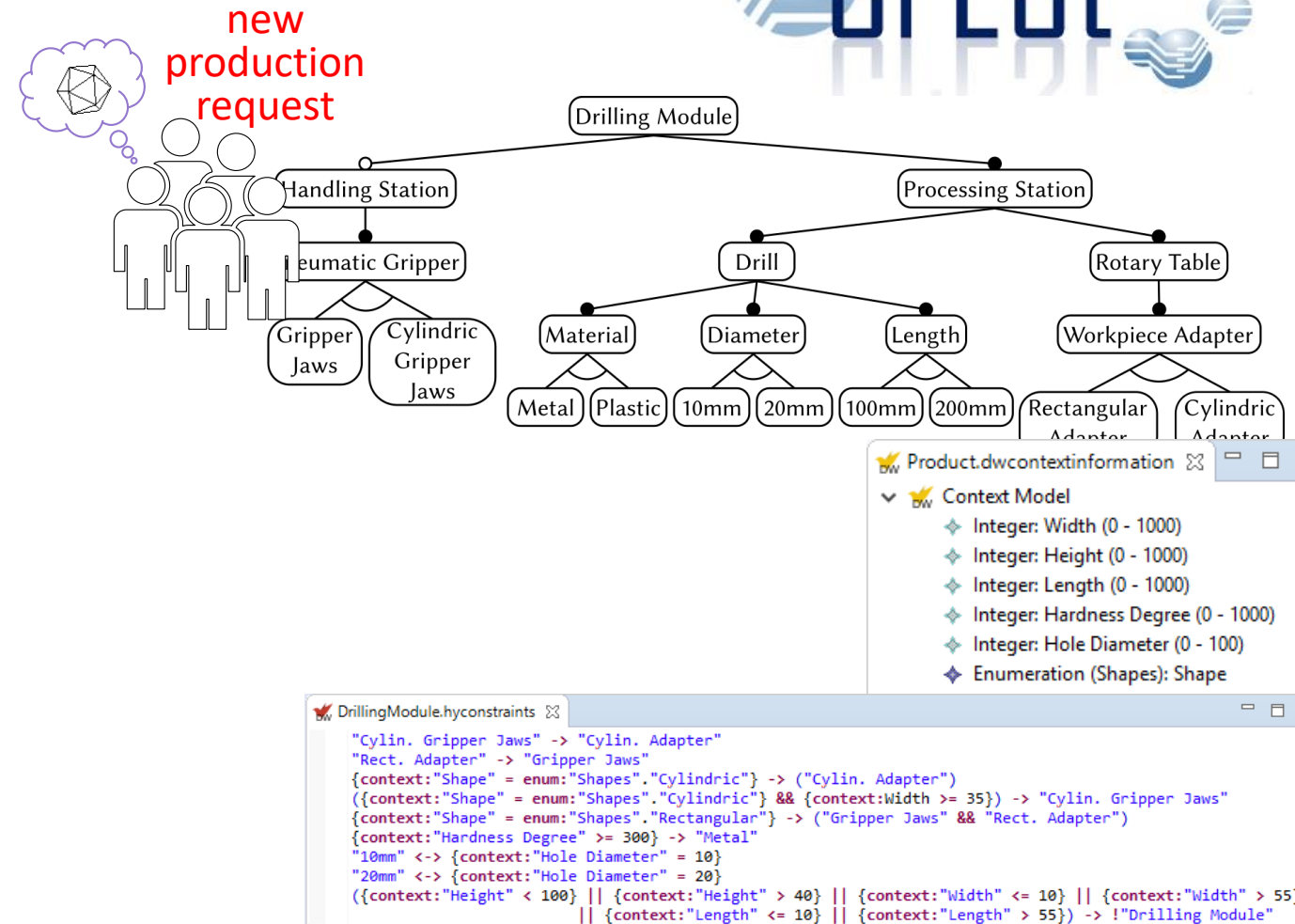
- Dependencies are modeled as **cross-tree constraints**
- Dependencies between:
 - components
 - resource parameters
 - product parameters
 - context information



```

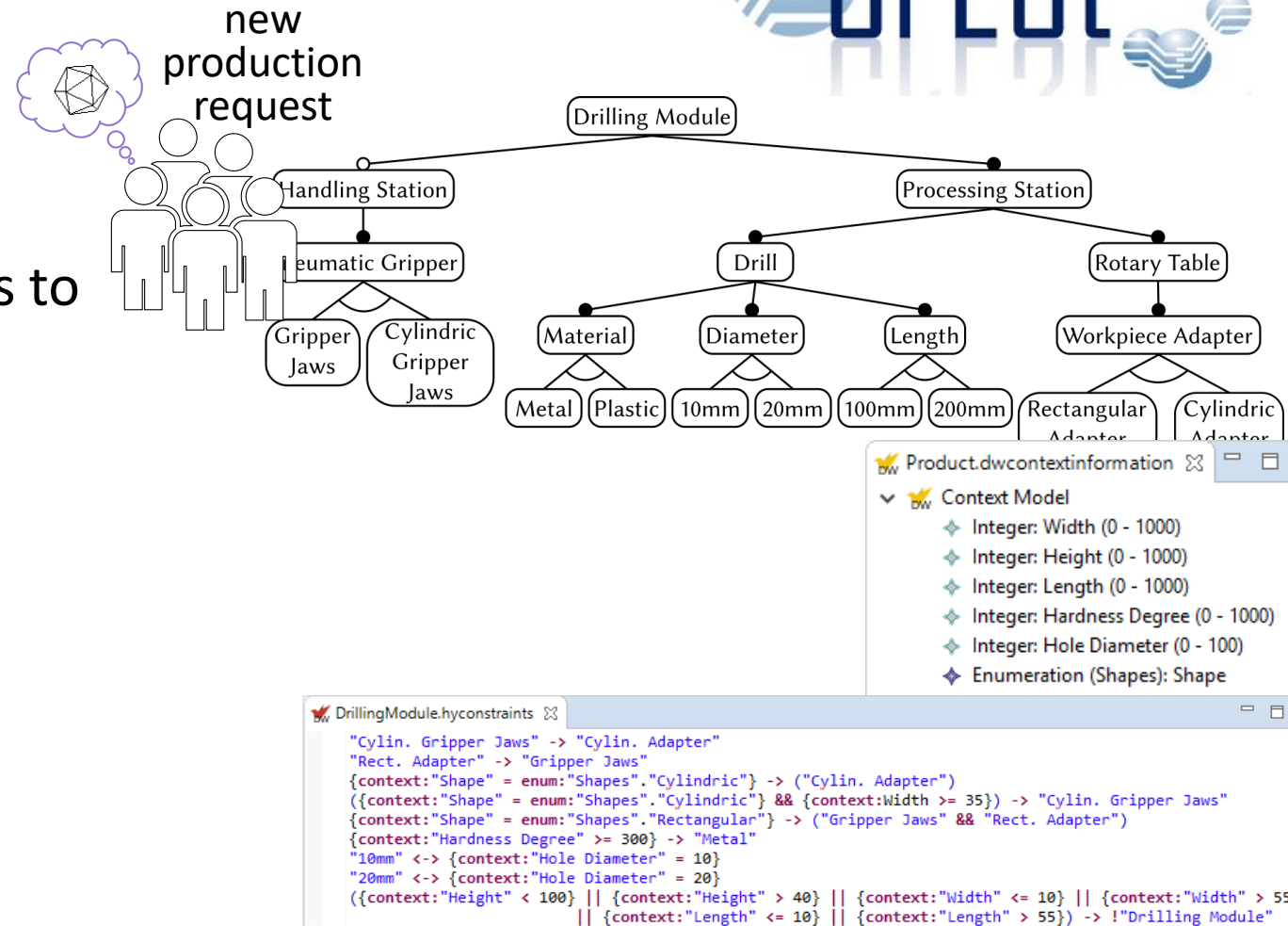
DrillingModule.hyconstraints
"Cylin. Gripper Jaws" -> "Cylin. Adapter"
"Rect. Adapter" -> "Gripper Jaws"
{context:"Shape" = enum:"Shapes"."Cylindric"} -> ("Cylin. Adapter")
({context:"Shape" = enum:"Shapes"."Cylindric"} && {context:Width >= 35}) -> "Cylin. Gripper Jaws"
{context:"Shape" = enum:"Shapes"."Rectangular"} -> ("Gripper Jaws" && "Rect. Adapter")
{context:"Hardness Degree" >= 300} -> "Metal"
"10mm" <-> {context:"Hole Diameter" = 10}
"20mm" <-> {context:"Hole Diameter" = 20}
({context:"Height" < 100} || {context:"Height" > 40} || {context:"Width" <= 10} || {context:"Width" > 55} || {context:"Length" <= 10} || {context:"Length" > 55}) -> !"Drilling Module"
    
```

Context-sensitive Variability Model Reconfiguration



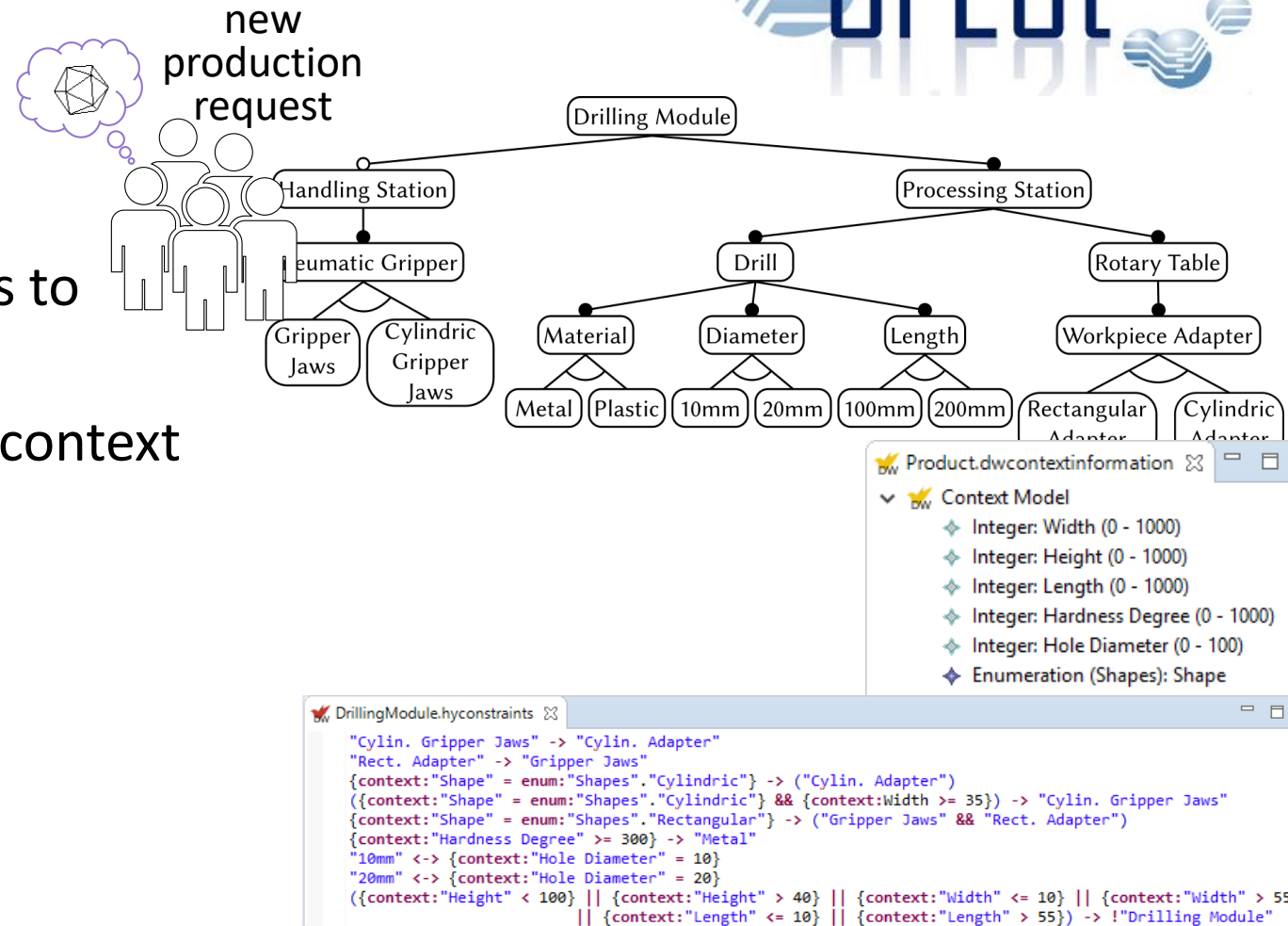
Context-sensitive Variability Model Reconfiguration

1. Translate feature model & constraints to Boolean formulas

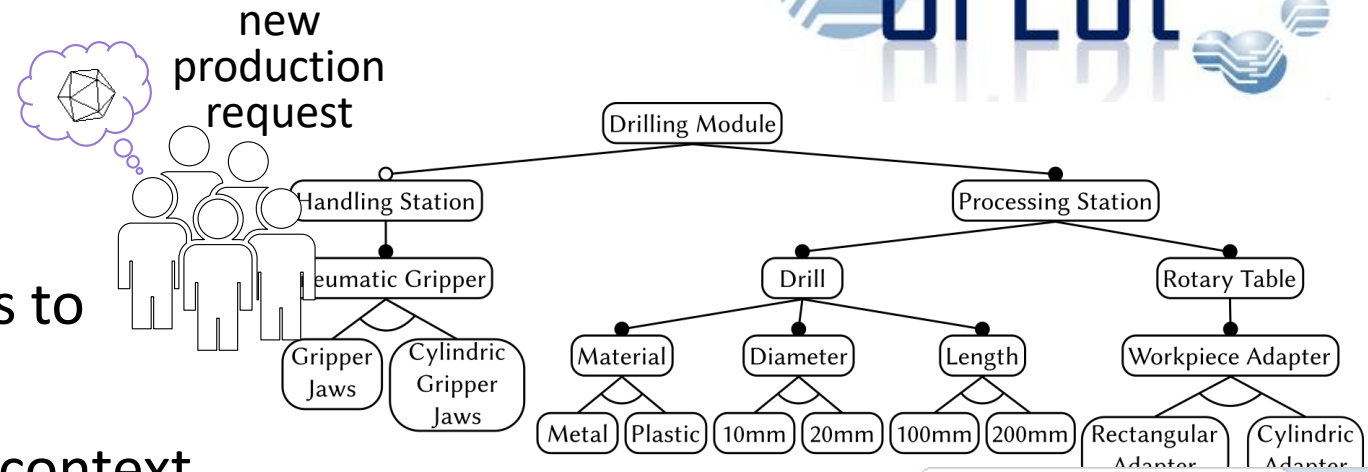


Context-sensitive Variability Model Reconfiguration

1. Translate feature model & constraints to Boolean formulas
2. Translate new production request to context values in formula
 - e.g., "Shape = Cylindric"



Context-sensitive Variability Model Reconfiguration



1. Translate feature model & constraints to Boolean formulas
2. Translate new production request to context values in formula
 - e.g., “Shape = Cylindric”
3. Evaluate whether old feature configuration satisfies all formulas.
 - a. Yes → done
 - b. No → Find a new solution for entire formula
 - Optimization problem: new solution similar to old one

Product.dwcontextinformation

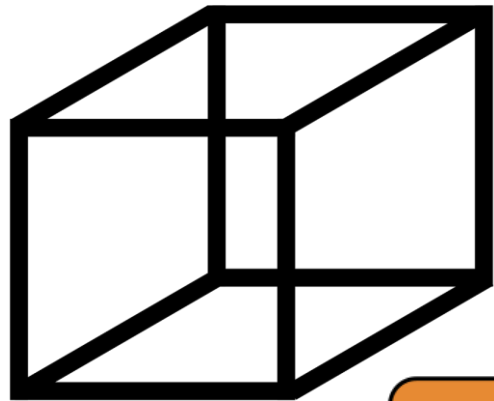
- Context Model
 - Integer: Width (0 - 1000)
 - Integer: Height (0 - 1000)
 - Integer: Length (0 - 1000)
 - Integer: Hardness Degree (0 - 1000)
 - Integer: Hole Diameter (0 - 100)
 - Enumeration (Shapes): Shape

DrillingModule.hyconstraints

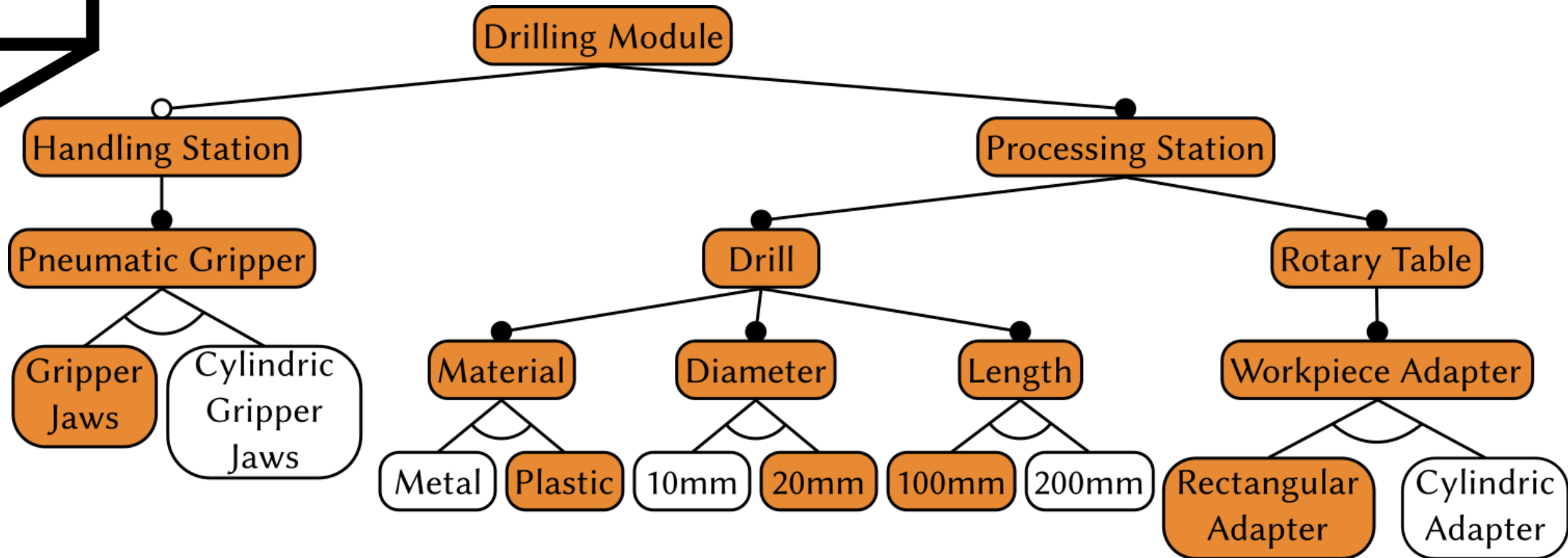
```

"Cylin. Gripper Jaws" -> "Cylin. Adapter"
"Rect. Adapter" -> "Gripper Jaws"
{context:"Shape" = enum:"Shapes"."Cylindric"} -> ("Cylin. Adapter")
({context:"Shape" = enum:"Shapes"."Cylindric"} && {context:Width >= 35}) -> "Cylin. Gripper Jaws"
{context:"Shape" = enum:"Shapes"."Rectangular"} -> ("Gripper Jaws" && "Rect. Adapter")
{context:"Hardness Degree" >= 300} -> "Metal"
"10mm" <-> {context:"Hole Diameter" = 10}
"20mm" <-> {context:"Hole Diameter" = 20}
({context:"Height" < 100} || {context:"Height" > 40} || {context:"Width" <= 10} || {context:"Width" > 55} || {context:"Length" <= 10} || {context:"Length" > 55}) -> !"Drilling Module"
  
```

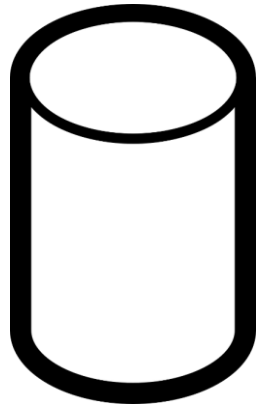
Context-sensitive Variability Model Reconfiguration – Example



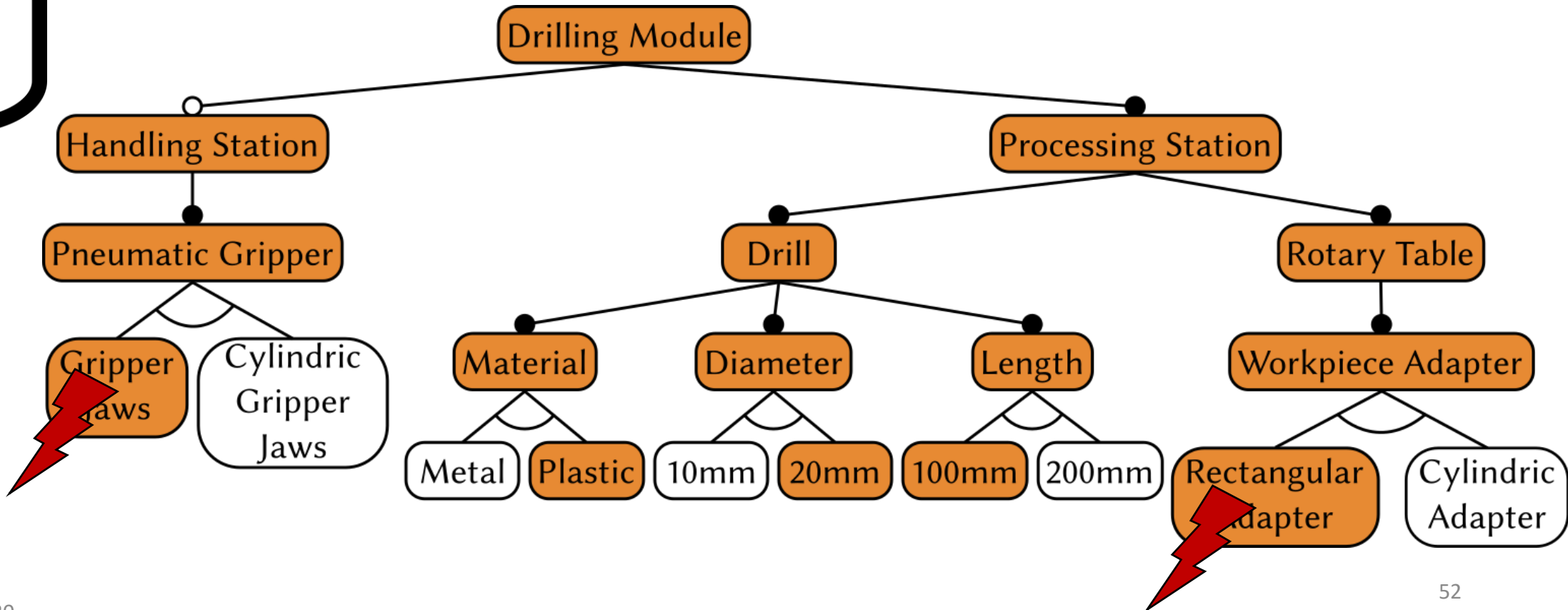
Context:
 Shape = Rectangular



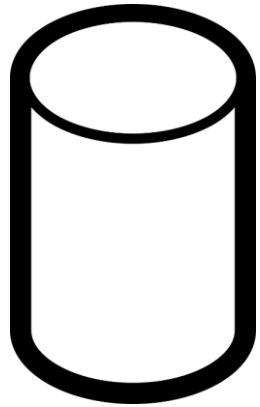
Context-sensitive Variability Model Reconfiguration – Example



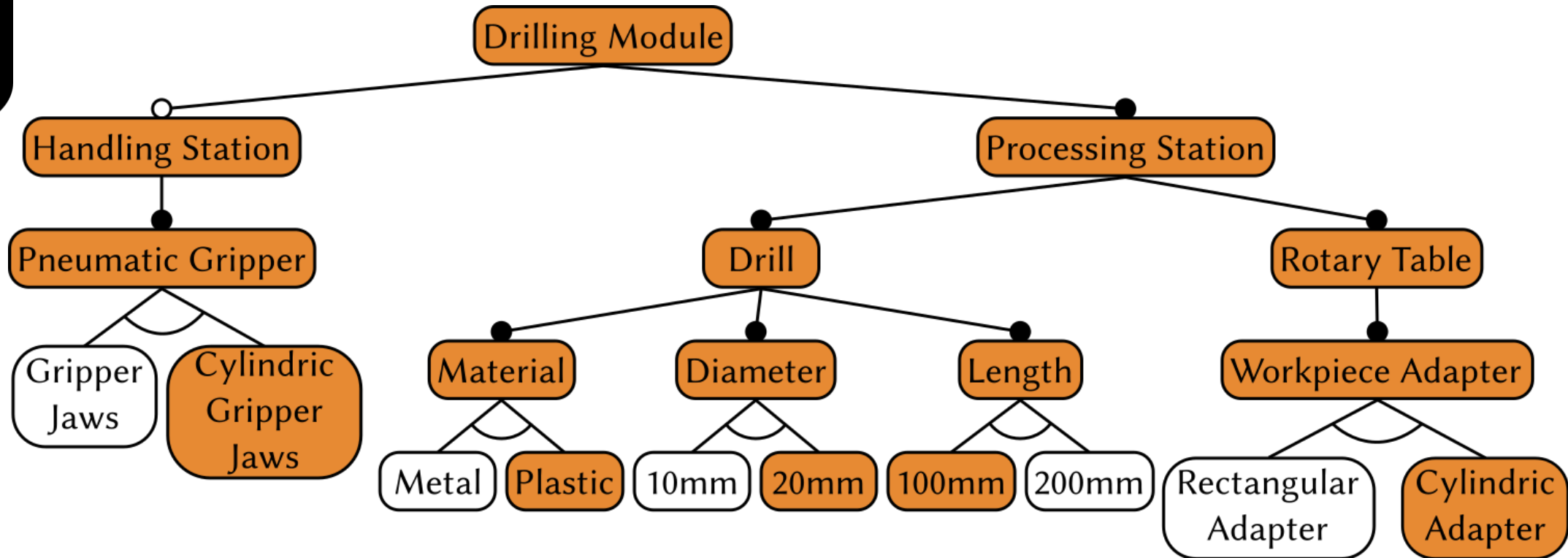
Context:
Shape = Cylindric



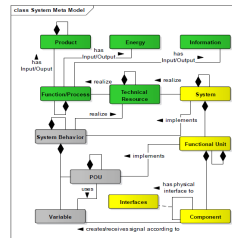
Context-sensitive Variability Model Reconfiguration – Example



Context:
 Shape = Cylindric



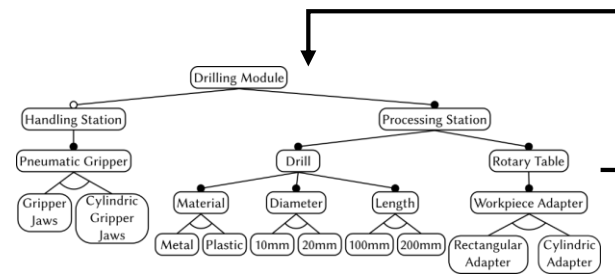
Summary



System Ontology



<<derive>>



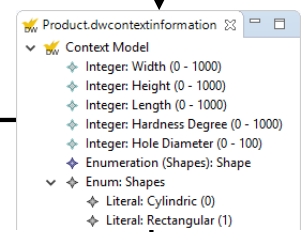
Feature-Context Dependencies

<<define>>

```

    DrillingModuleHyConstraints {
        "Cylin. Gripper Jaws" -> "Cylind. Adapter"
        "Rect. Adapter" -> "Gripper Jaws"
        (context:"Shape" = enum:"Shapes"."Cylindric" -> ("Cylind. Adapter"))
        ((context:"Shape" = enum:"Shapes"."Cylindric" && (context:"width" > 35)) -> "Cylin. Gripper Jaws")
        (context:"Shape" = enum:"Shapes"."Rectangular" -> ("Gripper Jaws" && "Rect. Adapter"))
        (context:"Hardness Degree" >= 380 -> "Metal")
        "10mm" <-> (context:"Hole Diameter" = 10)
        "20mm" <-> (context:"Hole Diameter" = 20)
        (context:"height" < 100) || (context:"height" > 40) || (context:"width" <= 10) || (context:"width" > 55)
        || (context:"length" <= 10) || (context:"length" > 55) -> !"Drilling Module"
    }
    
```

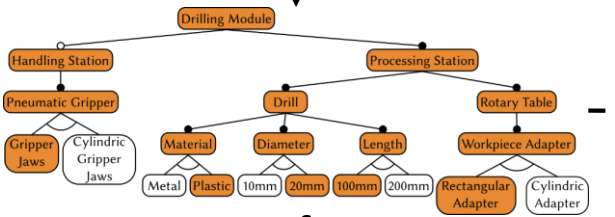
<<define>>



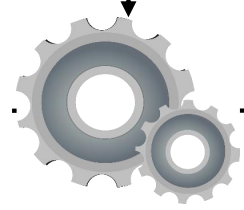
Context Model

Feature Model

<<derive>>



Current Configuration

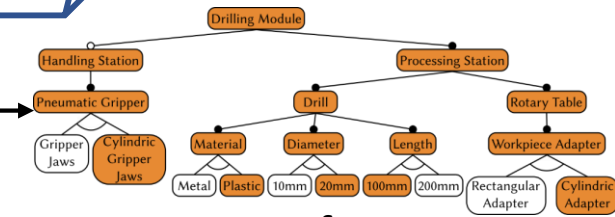


Solver

<<calculates>>

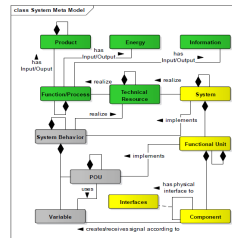


New Production Request



New Configuration

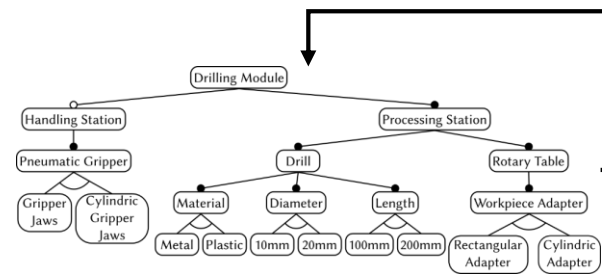
Summary



System Ontology



<<derive>>



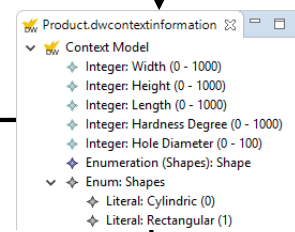
Feature-Context Dependencies

<<define>>

```

    DrillingModuleHyConstraints {
        "Cylin. Gripper Jaws" -> "Cylin. Adapter"
        "Rect. Adapter" -> "Gripper Jaws"
        (context:"Shape" = enum:"Shapes", "Cylindric") -> ("Cylin. Adapter")
        ((context:"Shape" = enum:"Shapes", "Cylindric") && (context:"diameter" > 35)) -> "Cylin. Gripper Jaws"
        (context:"Shape" = enum:"Shapes", "Rectangular") -> ("Gripper Jaws" && "Rect. Adapter")
        (context:"Hardness Degree" >= 380) -> "Metal"
        "10mm" <-> (context:"Hole Diameter" = 10)
        "20mm" <-> (context:"Hole Diameter" = 20)
        (context:"height" < 100) || (context:"height" > 40) || (context:"width" <= 10) || (context:"width" > 55)
        || (context:"length" <= 10) || (context:"length" > 55) -> "!Drilling Module"
    }
    
```

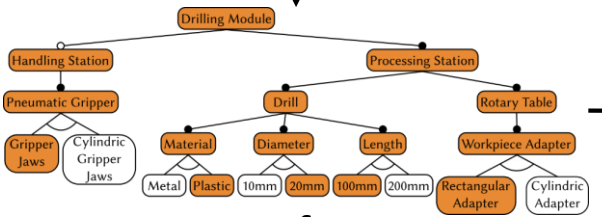
<<define>>



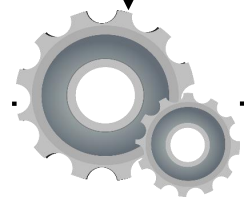
Context Model

Feature Model

<<derive>>



Current Configuration

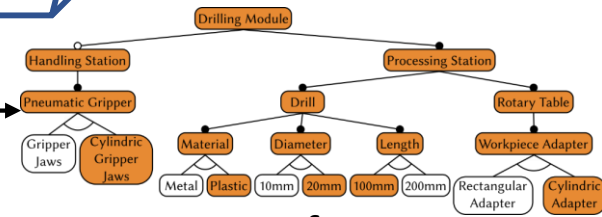


Solver

<<calculates>>



New Production Request



New Configuration

- Demo Video on the Marketplace!
- Tooling open source: <https://gitlab.com/DarwinSPL/DarwinSPL>
- Publications: Context-sensitive reconfiguration of collaborative manufacturing systems, B. Caesar et al.
DarwinSPL: an integrated tool suite for modeling evolving context-aware software product lines, M. Nieke et al.



*Vielen
Dank!*



Fragen ?



GEFÖRDERT VOM



Bundesministerium
für Bildung
und Forschung

Backup

- Create a satisfiability request

- Variables:

- Context
- Features
- Feature attributes
- Variable domains

- Constraints:

- Feature model structure
- Cross-tree constraints
- Validity formulas

- Negate formula to find anomalies

- A solution of $\neg\varphi_F$ represents context values for which no solution exists

$$\varphi_F =$$

$$\forall c_1, \dots, c_n$$

- $\exists f_1, \dots, f_m$
- $\exists a_1, \dots, a_k$
 - φ_{dom}

$$\wedge \varphi_{F,struct}$$

$$\wedge \varphi_{F,ctc}$$

